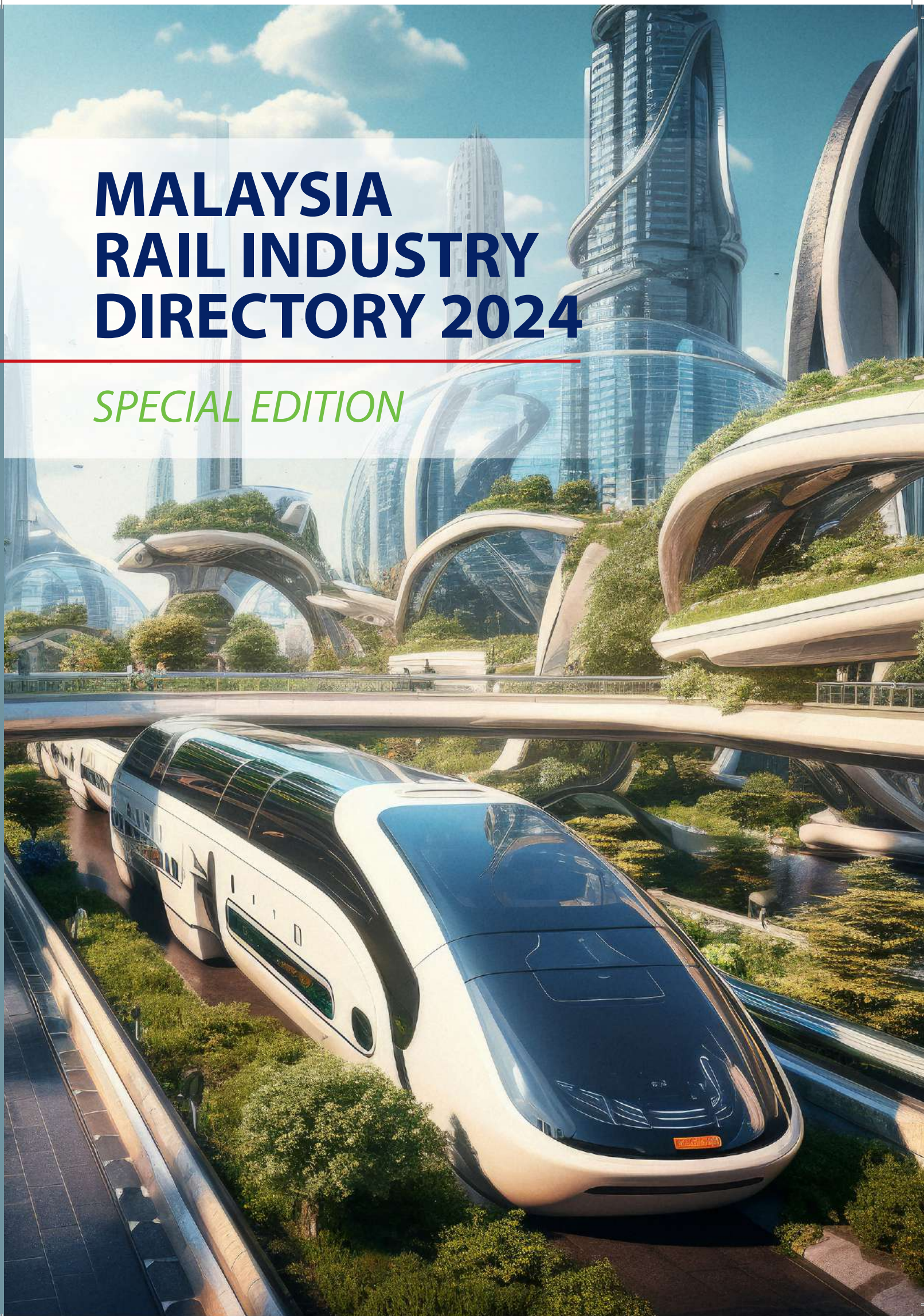


# MALAYSIA RAIL INDUSTRY DIRECTORY 2024

---

*SPECIAL EDITION*



# RAIL LOGOS OF SUCCESS

## Members of MARIC



GLOBAL LIGHTNING TECHNOLOGIES (M) SDN BHD

Global Rail



## Supporting Ministries and Agencies





## Supporting Operators & Universities





**MARK**  
Malaysia Rail Industry Corporation

**Building Future Innovations  
with Sustainable Mobility  
and Smart Partnerships**

# WHAT'S IN STORE

[Yang Berhormat Minister of Transport Malaysia Remarks](#)

[President of MARIC Remarks](#)

[MARIC - Who We Are](#)

[MARIC's Engagement and Experiential Opportunities](#)

[Malaysian Rail History](#)

[Current & Future Projects](#)

[Track Together, Advance Future](#)

[Regional Collaboration & Partnership](#)

[What MARIC Offers](#)

[Our Members -  
Malaysia Rail Industry Directory](#)

[Rail System's Supply Chain in Malaysia](#)

[Come & Join Us](#)

[Editorial Team](#)

[Acknowledgements](#)



# REMARKS



## **YANG BERHORMAT TUAN LOKE SIEW FOOK, MINISTER OF TRANSPORT MALAYSIA**

Every rail project presents unique opportunities to further advance the capacity and capabilities of the local rail industry. While the primary goal is to develop infrastructure and systems that enable efficient rail services, these projects must also serve as catalysts for advancing innovation, developing talent, and empowering local players. Where there are gaps in capacity and capabilities, implementing a partnership model between local players and like-minded foreign OEMs will ensure a win-win outcome and help create a sustainable rail industry ecosystem that can effectively support the operations and maintenance of these systems throughout their life cycle. At the same time, both the Government and MARIC must work more closely to embrace advanced technologies, adopt best practices, and apply new models for financing, operations, and maintenance. The Minister supports MARIC and recognises MARIC as the official representation and voice of the rail industry. Rail transportation is fast becoming, if not already, the preferred mode of choice in many smart cities worldwide, and Malaysia must be prepared to position itself as a key systems provider in the global and regional rail industry. Let's Advance Together for the Future!"



MINISTRY OF TRANSPORT  
MALAYSIA



## THE PRESIDENT OF MARIC

It gives me great pleasure to present to you the Malaysia Rail Industry Directory 2024 which provides a comprehensive view of the rail industry ecosystem and the quite extensive supply chain stakeholders in Malaysia. This directory is developed and produced in conjunction with the largest rail show in the world, InnoTrans 2024 in Berlin, Germany and MARIC's involvement in putting up a Malaysian Pavilion which for the first time showcases our companies' participation under one roof.

MARIC has grown from strength to strength. The number of members has grown to 65. It has positioned itself well in the rail ecosystem as the recognised voice of the industry and a game changer with aspirations to transform and innovate the Malaysian rail sector. With the strong support of the industry players, Government agencies and universities, the collective strength being harnessed through MARIC will elevate the capability and capacity of our companies and attract more young and creative people into the rail community.

I would like to express our deepest appreciation to our outstanding partners namely Railway Assets Corporation (RAC), Malaysian Industry-Government Group for High Technology (MIGHT) and the Land Division of the Ministry of Transport, rail operators, relevant agencies and universities, for their continued support and cooperation. And, most of all, the members of MARIC who continue to serve the nation even in the most challenging circumstances, and live up to the adage "If you want to go fast, go alone, but if you want to go far, go together".



**Datuk Dr. Mohd Yusoff Sulaiman**  
President  
Malaysia Rail Industry Corporation (MARIC)



# MARIC- WHO WE ARE

## Our Mission

To promote the development of the rail industry and increase the visibility of companies and their competencies.

## Our Objectives

To support government policies with regards to national rail industry development.

To maximise the benefits from government investment to the local rail and its supporting industries.

To be the focal point for rail industry engagement in Malaysia.

To be the focal point in the strategic development of human capital, technology and supply chain.



**PRESIDENT**  
Datuk Dr.  
Mohd Yusoff Sulaiman

# THE COUNCIL MEMBERS AND CORPORATE MANAGEMENT

## COMMITTEE COUNCIL MEMBERS



Hazwan Alif  
Abdul Rahman



Datuk Mohamed  
Razeek Md  
Hussain



Dato' Ir  
Mohamad Khairi  
Ambran



Dr. Arvind Hari  
Narayanan



Ir Sharifah Azlina  
Raja Kamal  
Pasmah



Timothy John



Kijay Kimis



Dato' Indera  
Ir. Zohari  
Sulaiman



Mohd Rizal  
Sapari



Mohamad  
Asroll Mansor



Mansor Tahir



Haniff Ghazali



Eena Khalil Lim

The committee is governed by a Board of Trustees which consists of rail players in the rail industry. The committee brings together years of experience, industry knowledge and strong linkage with the relevant government ministries and agencies.

## CORPORATE MANAGEMENT TEAM



**PRESIDENT**  
Datuk Dr. Mohd Yusoff Sulaiman



HONORARY SECRETARY  
Haniff Ghazali



HONORARY TREASURER  
Eena Khalil Lim



INTERNAL AUDITOR  
Dato' Nor Adha Yahya



GENERAL MANAGER  
CORPORATE STRATEGY  
Farahaiza Amin



SENIOR ASSOCIATE  
TRANSPORT & LOGISTICS ECONOMICS  
Dr. Roslina Ahmad



ASSOCIATE CORPORATE  
COMMUNICATIONS  
Ammar Abd Rahim



GRAPHIC &  
MULTIMEDIA DESIGNER  
Kamal Sutling



CREATIVE CONTENT  
DESIGNER  
Zulhamizan Zuhairi



ASSOCIATE  
SUPPLY CHAIN  
Md. Farid Jaafar



ASSOCIATE  
TECHNICAL (WAYSIDE SYSTEM)  
Azirinda Mohd Sultan

# MARIC's Engagement and Experiential Opportunities



Export Acceleration Mission by MATRADE to Jakarta, Indonesia



MARIC Members Get-Together



57th ASEAN Senior Transport Officials Meeting (57th STOM)





MARIC Rail Signalling Dinner



MARIC 4th Annual General Meeting



MARIC New Line-Up 2024-2026



MARIC Members Get-Together



Panelist of the Forum for Asia Pacific Rail 2024 Bangkok, Thailand



Huawei Global Rail Summit 2024 Bangkok, Thailand



MARIC's Courtesy Visit to Railway Assets Corporation (RAC)

# MALAYSIAN RAIL HISTORY

The Malaysian railway has existed for over 130 years, from transporting tin ore in the 1880s to becoming fully electrified in 1995.

Malaysia is set to implement a high-speed rail system, connecting Kuala Lumpur to Singapore in the near future.

## 1880-1900 Early Beginnings

- Building railway tracks in Semenanjung, Sabah, Seberang Prai, Perak, Selangor, Kuala Lumpur, Seremban, Kota Bharu
- First railway track opened:  
- Semenanjung: Taiping to Port – Weld on 1st Feb 1885
- Sabah: Weston to Beaufort in 1896



## 1900-1950 Great Expansion

- More railway track expansion in Peninsular Malaysia until Singapore and in Sabah
- Malaysia-Singapore Causeway Rail Track



## 1950-2000 Modernisation



- Class 20 Diesel Locomotive built by English Electric Co, England (1957)

- KTMB Class 23 Locomotive built by Hitachi, Japan (1983)



- STAR LRT: 2 car set of PUTRA LRT (1998)

## 2000-2018 Improvement



- The ERL KLIA Ekspres is an express airport rail link serving Kuala Lumpur International Airport (KLIA) that began operations on April 14, 2002



- Prasarana Berhad introduced 4-car LRT (2009)



- KTMB introduced SCS Class 92 (2012)
- ERL started service to KLIA2 on 2nd May 2014
- 2018: KTM Subang – Skypark service started



- July 2017: MRT line 1 fully operated from Sungai Buloh to Kajang.

## 2018-2030 Current & Future



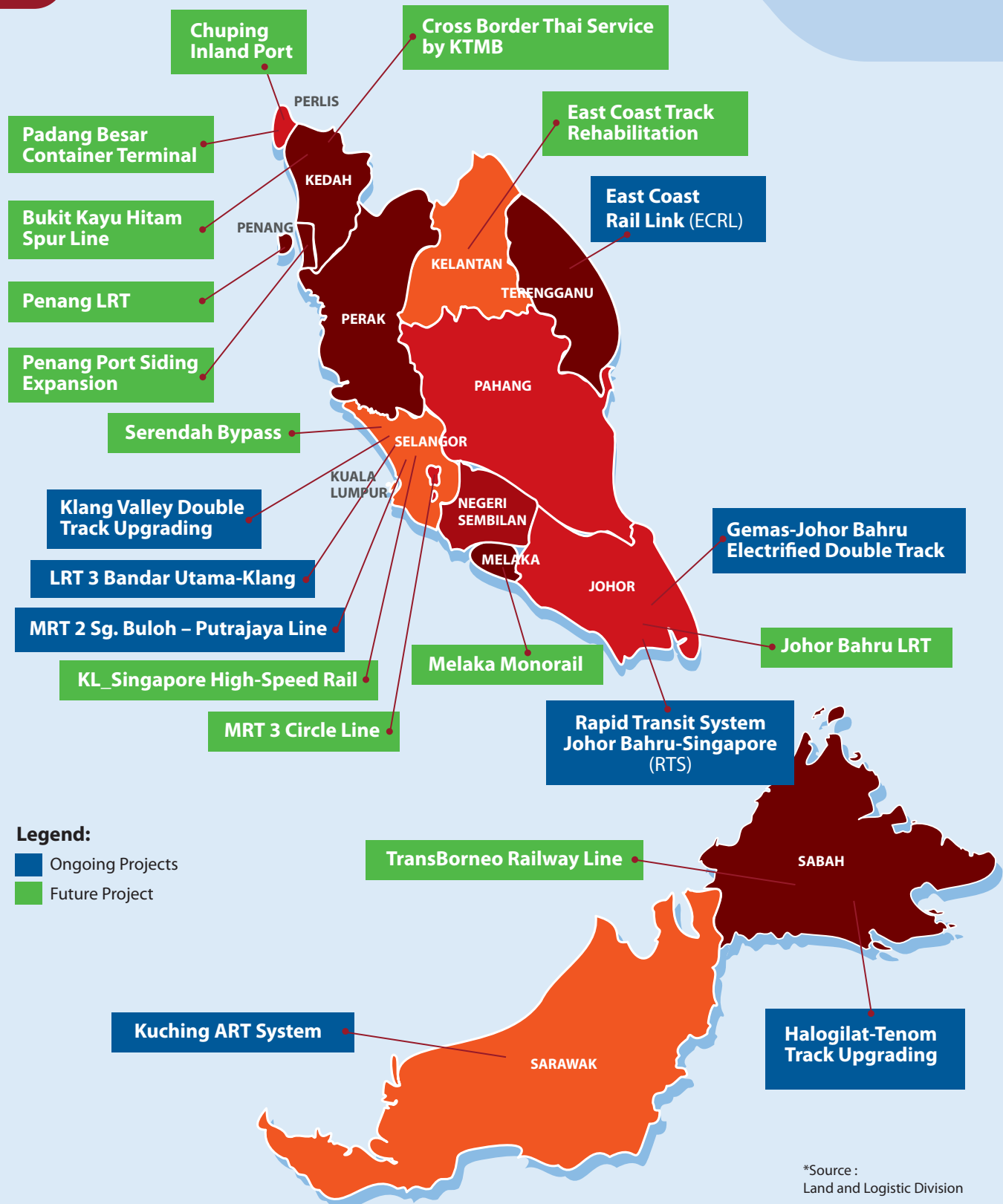
- MRT 2 Putrajaya Line totaling 57.7 km (35 miles 68 chains) in length, includes 5.5 km (3.4 mi) annexed from the MRT Kajang Line, making it the longest metro line in Malaysia



- The 665-km East Coast Rail Link (ECRL) will traverse the East Coast states of Kelantan, Terengganu, and Pahang before linking the Klang Valley on the West Coast of Peninsular Malaysia
- MRT 3 Circle Line with 50.8 km of rail alignment, a total of 33 stations, which will consist of 26 elevated and 7 underground stations will be built
- Penang LRT will connect Komtar and Bayan Lepas with 23 stations along the 26.8 km line. The rail line also includes a Georgetown-Butterworth LRT Line that will connect the island with the mainland
- The Malaysia High-Speed Rail (MyHSR) is a non-stop or express service that will connect Bandar Malaysia, Kuala Lumpur to Jurong East, Singapore and vice versa, and will not take more than 90 minutes

Source: Land and Logistic Division

# CURRENT & FUTURE PROJECTS





# TRACK TOGETHER, ADVANCE FUTURE

Our mission is to promote the development of the rail industry and increase the visibility of the local rail industry players and their competencies.

## Delivering our Core Strategies

- Localisation engagement program with suppliers to increase local content
- Collaboration with local industry, OEMs and international suppliers
- Financial assistance – Incentives for the rail industry
- Global market penetration
- Sustainable development goals
- Green technology program
- Nurturing local industry players to meet international requirements

## Our Aim

MARIC aims to develop local supplier and vendor capabilities to manage systems MRO, systems construction, rehabilitation and mid-life refurbishments, and component supply activities in the future.

## Malaysian Rail Industry Ecosystem

### Malaysian Rail Fact Sheet



More than  
**80 local companies**



Consists of  
more than  
**80% SMEs**



Number of  
workers  
**>22,000 human capital**



**Top 3 world**  
Monorail  
manufacturer



**Providing**  
technical  
support and  
expertise  
to ASEAN  
countries and  
Middle East

\* Not including attrition rate of 3-5% inter-sectoral movement and potential job upsurge in ASEAN & Middle East

### Projections



Projection of  
professional  
workers in 2030  
**100,000 workers**



Demand for  
rail technical  
manpower in 2022  
**23,600 worker**

# REGIONAL COLLABORATION & PARTNERSHIP

## TRANS-ASIAN RAILWAY NETWORK



Distance = 6,617km

Alignment = Meter Gauge (1,000 mm)

Proposed during 5th ASEAN Summit,  
Bangkok 1995

To facilitate trade, tourism  
& inter-border movement

To be linked with Trans-Asian Railway Network

Members:



Cambodia



Lao PDR



Malaysia



Thailand



Vietnam



Myanmar



China



Singapore

\*Source : Ministry of Transport Malaysia

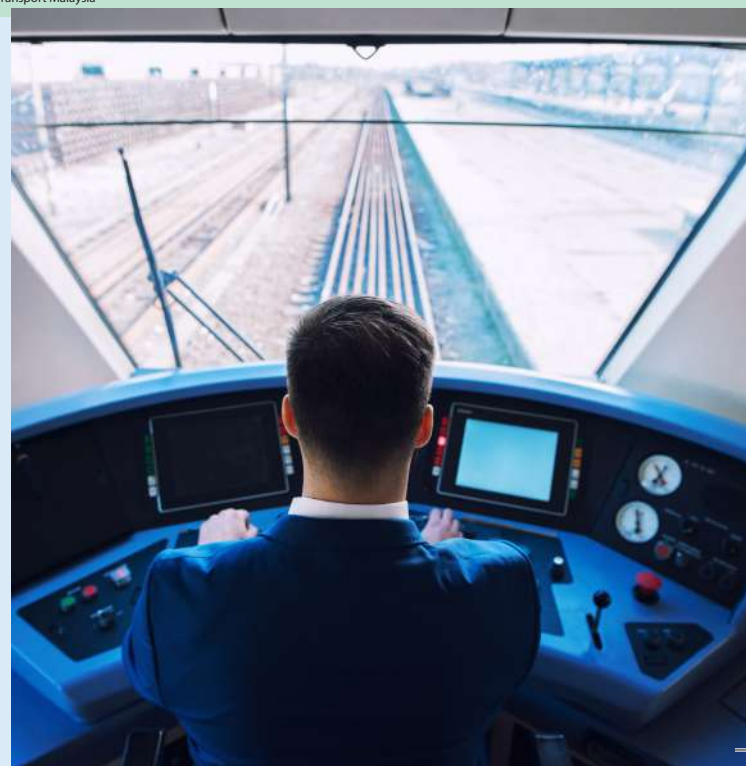
## STATUS

### On-going development:

- Lao LPDR - China
- Malaysia Upgrade: Gemas-Johor Bahru
- Thailand Double Track Upgrade
- Vietnam Rehabilitation & Upgrade

### Planning stage:

- Cambodia-Vietnam: New Alignment
- Myanmar-Thailand: New Alignment
- Lao LPDR: New Alignment
- Cambodia: Upgrade & Rehabilitation
- Vietnam: Upgrade & Planning



## End-to-End System Capabilities

# MARIC PARTNERS

# WHAT MARIC Offers

### ► SIGNALLING

- AZTI Technology
- CMC Engineering
- Global Rail
- Rasma Corporation

### ► COMMUNICATION

- Aim Solutions
- D'Amante
- EV Dynamics
- NSSIT
- Recogine Technology
- Sapura Rail
- Willowglen
- XMT Technologies

### ► TRACK WORKS

- Asiakom
- Dhaya Maju Infrastructure Asia
- Emrail
- Lion Pacific
- Mastrak
- Trackwork & Supplies
- TWA Malaysia
- RC Asia

### ► ENGINEERING DESIGN & CONSULTANCY

- Infra Mobility
- Intereet Rail Engineering & Consulting
- HSS Integrated
- Khairi Consult
- KL Consult
- MDS Consultancy
- Megajati Consult
- Mutiara Perlis
- OPUS

### ► SYSTEMS INTEGRATOR

- Berjaya Rail
- IJM Corporation
- MMC Engineering

### ► AUTOMATED FARE COLLECTION

- IRIS Corporation
- Techstore Malaysia
- Teras Technology

### ► ROLLING STOCK

- Amantronic
- Artic Rail
- CKM Landas
- CTRM Composite Engineering
- Destini
- DK Composite
- DOM Industries
- Dreamedge
- ERL Maintenance
- Hartasuma
- Innoglass
- Majestic Engineering
- Malnaga
- Mayura Bumi
- Millennium Freight
- Perencana Dingin
- Scomi Engineering
- Teknoware Asia
- UMW M&E

### ► POWER & ELECTRIFICATION

- Info-matic Power
- Global Lightning
- Pestech
- Reltech
- VLP Engineering
- X Rails System
- YFY Engineering

### ► OEMs PARTNER

- Huawei Technologies Malaysia

### ► RAIL SIMULATOR

- Xcel Itech

### ► COLLABORATIVE OPERATOR

- Sarawak Metro



# Our Members **MALAYSIA RAIL INDUSTRY DIRECTORY**

The Malaysia Railway Industry Directory, published in September 2024, showcases the notable contributions and accomplishments of Malaysia Rail Industry Corporation (MARIC) and its member companies. With a network of over 60 organisations, MARIC is committed to creating collaboration across all levels of the rail supply chain to enhance productivity and deliver greater value.

This supply chain encompasses a comprehensive network of processes, organisations, and activities involved in Railway Engineering, including design, procurement, manufacturing, construction, installation, testing, commissioning, maintenance, supply management, and operations. MARIC focuses on seven (7) key systems engineering clusters: Rolling Stock, Signalling Systems, Telecommunication Systems (including SCADA), Power Supply and Distribution Systems (PSDS), Track Work, Depot Equipment, and Automatic Fare Collection (AFC) Systems. These clusters are vital for improving railway reliability and sustainability.

# ROLLING STOCK



**Amantronic** specialises in the manufacture and maintenance of rolling stock, ensuring reliability and performance. Their offerings include high-quality train components, rolling stock assembly, and comprehensive maintenance services. Amantronic's commitment to innovation and quality ensures their rolling stock solutions meet industry standards, providing efficient transportation for rail operators.

Contact Details : Izwan Sabri  
Email : [izwan@amantronic.com](mailto:izwan@amantronic.com)  
Contact Number : +6013-333 9500

Address : No 13A, Menara Mitraland, Suite D-15-3A, Jalan PJU 5/1,  
Kota Damansara, 47810 Petaling Jaya, Selangor, Malaysia.  
Website : [www.amantronic.com](http://www.amantronic.com)



**Artic Rail Sdn. Bhd.** (ARSB), founded in 2009, offers services in railway engineering, infrastructure development, building construction, telecommunication works, and civil engineering. The company is known for its turnkey development and project management capabilities and has gained a reputation as a rapidly growing Malaysian engineering and construction firm. Currently, ARSB focuses on railway rolling stock, particularly in transferring technology for high-tech components like traction equipment for Electric Multiple Units (EMU). Additionally, ARSB has expanded into the special purpose vehicle sector, specialising in the supply and repair of vehicles such as road sweepers, refuelers, and high-pressure water jetting tankers.

Contact Details : Mansor Tahir  
Email : [mansortahir@gmail.com](mailto:mansortahir@gmail.com)  
Contact Number : +6012-268 7910

Address : No. 7, Jalan Sb Jaya 2, Taman Industri Sb Jaya,  
47000 Sungai Buloh, Selangor, Malaysia.  
Website : [www.articrail.com](http://www.articrail.com)



**CTRM's** breakthrough in expanding its business plans came timely as the company secured a contract from SCOMI Rail to design, manufacture and supply composite panels for the Mumbai and KL Monorail projects in 2009 & 2012 respectively. The contract involves both interior aesthetic panels and exterior structural panels. These panels comply to NFPA 130 & BS 6853 fire, smoke and toxicity (FST) requirements for railway components.

Contact Details : Airul Adiba Any  
Email : [adib@ctrm.com.my](mailto:adib@ctrm.com.my)  
Contact Number : +6012-227 2585

Address : Composites Technology City, Batu Berendam, 75350 Melaka,  
Malaysia  
Website : [www.ctrm.com.my](http://www.ctrm.com.my)



**CKM Landas** focuses on rolling stock development and maintenance, delivering reliable solutions for rail operators. Their offerings include design, manufacture, and maintenance of high-quality train components, ensuring rolling stock reliability. CKM Landas' commitment to quality ensures their solutions meet industry standards, providing efficient transportation services.

Contact Details : Dato' Nor Adha Yahya  
Email : [adha@ckmlandas.com](mailto:adha@ckmlandas.com)  
Contact Number : +6019-322 6144

Address : Level 7, Menara Khuan Choo, 75A Jalan Raja Chulan,  
50200 Kuala Lumpur, Malaysia.  
Website : [www.crrcckm.com](http://www.crrcckm.com)



**Destini** is a company that provides integrated engineering solutions and has big interests in the aviation & defence, energy, mobility and marine. Their engineering capabilities spread worldwide with facilities and operations in Asia, Australia, Middle East and Europe.

Their talented engineers have exceptional depth in their expertise, and coupled with state-of-the-art technology, a safe working environment and strict adherence to quality standards, They have emerged as a trusted global name in our four core industries.

Contact Details : Ismail Mustaffa  
Email : Ismail@destinigroup.com  
Contact Number : +6012-282 5160

Address : No. 10, Jalan Jurunilai U1/20, Hicom Glenmarie  
Industrial Park, 40150 Shah Alam, Selangor, Malaysia.  
Website : [www.destinigroup.com](http://www.destinigroup.com)



**DK Composites Sdn. Bhd.** established in 1997 and located in Composites Tech City, Batu Berendam, Melaka, Malaysia specialises in advanced composites manufacturing using state-of-the-art technology and sophisticated engineering techniques. Initially set up for major dome construction projects in Malaysia, dk Composites has since gained recognition as a high-end composites fabricator. The company offers a wide range of composite-based applications, including design, development, and installation of composite structures, marine composites, racing yachts, power boats, modular houses, rail and transport solutions, and electric vehicles. dk Composites serves clients across Europe, the Middle East, the USA, Australia, and Asia, delivering projects of world-class standards.

Contact Details : Adzlan Basir  
Email : [adzlan@dkcomposites.com](mailto:adzlan@dkcomposites.com)  
Contact Number : +6012-631 8115

Address : Composites Technology City, Jln M 31, Taman Merdeka,  
75350 Batu Berendam, Melaka, Malaysia.  
Website : [www.dkcomposites.com](http://www.dkcomposites.com)



**DOM Industries** was founded on October 10th, 1980, by a group of young, driven individuals who sought to develop the railway and power industries in Malaysia. Today, DOM Industries has evolved into an EPCC company, expanding its focus beyond railway and power to include quantity surveying, BIM modeling, and mechanical, electrical, and civil engineering. This is just the beginning. DOM is committed to improving core industries in Malaysia and developing specialists in various fields of engineering.

Contact Details : Timothy John  
Email : [timothy@dom.com.my](mailto:timothy@dom.com.my)  
[timothyjohn13@gmail.com](mailto:timothyjohn13@gmail.com)  
Contact Number : +6017-332 2966

Address : Lot.25, Jalan Pasaran 23/5, Kawasan MIEL, Seksyen 23 ,  
40300 Shah Alam, Selangor, Malaysia.  
Website : [www.dom.com.my](http://www.dom.com.my)



**DreamEDGE Sdn. Bhd.** is driven by innovation and engineering, focusing on product, process, business, and service innovations. Recognised as a local Research and Development (R&D) company by the Malaysian Investment Development Authority (MIDA), DreamEDGE leverages its expertise in automation, product development, system integration, and styling to create cutting-edge technologies. The company prioritises continuous innovation, embracing risks as part of its growth. Committed to delivering state-of-the-art solutions, DreamEDGE aims to be the partner of choice in providing innovative, technology-driven services that meet the evolving needs of consumers.

Contact Details : Hisham Razuli  
Email : [hisham@dreameedge.jp](mailto:hisham@dreameedge.jp)  
Contact Number : +6012-667 9575

Address : C-16-01, Level 16, iTech TowerJalan Impact, Cyber 663000  
Cyberjaya, Selangor, Malaysia.  
Website : [www.dreameedge.jp](http://www.dreameedge.jp)

## ROLLING STOCK (Continued)



**ERL Maintenance Support Sdn. Bhd.** (E-MAS) was established to commission, operate, and maintain Malaysia's two fastest Express Rail Link (ERL) services, KLIA Express and KLIA Transit. Located in Sepang, Selangor, E-MAS is renowned for its impeccable on-time service and perfect safety record. Wholly owned by Express Rail Link Sdn Bhd (ERLSB), E-MAS specialises in providing safe, reliable, and high-quality railway services, promoting rail as an environmentally sustainable and energy-efficient mode of transportation. The company's tagline is "Effective Railway Operations; Reliable System Maintenance."

Contact Details : Thomas Baake  
Email : thomas.baake@emskliaekspres.com  
Contact Number : +6012-225 3621

Address : Kompleks Rel Udara, Bandar Baru Salak Tinggi,  
43900 Sepang, Selangor, Malaysia.  
Website : www.emskliaekspres.com



**Hartasuma Sdn. Bhd.** a pioneer in Malaysia's rail industry, has supplied over 400 locally assembled passenger coaches and LRTs, including to Prasarana Malaysia Berhad and Keretapi Tanah Melayu Berhad. Currently, they are providing 27 new LRT trains for Kuala Lumpur's Kelana Jaya line. The company leverages its technological expertise to offer a range of services, including urban transit, mainline travel, and regional transport, focusing on engineering, refurbishment, and maintenance. HARTASUMA is committed to delivering sustainable transportation solutions, embodying its motto, "EMPOWERING MOBILITY".

Contact Details : Mohd Rizal Sapari  
Email : rizal@hartasuma.com  
Contact Number : +6018-385 2692

Address : Lot 29, Jalan Sungai Pinang 4/8, Taman Perindustrian  
Pulau Indah, 42920 Pulau Indah, Selangor, Malaysia.  
Website : www.hartasuma.com



**Innoglass** is dedicated to providing customers with high quality safety glass that offers a cost-effective and eco-friendly approach to daily protection. While many consumers may not realize, the windows that they glance through each day can at times be the only protection they have from accidents, natural disasters and environmental hazards. For this reason, Innoglass maintains innovative solutions in safety glass products for both architecture and automotive function. Since 2004, we have established relationships with leaders in the glassblowing industry to ensure the safety of our customers, their passengers and the commercial traffic. They specialise in the development of high level safety glass that attributes to the sophisticated features of your architectural or interior designs.

Contact Details : Lim Ler Kern  
Email : lekern@innoglass.com.my  
Contact Number : +6012-583 3867

Address : Lot 763, Jalan Monorel, Sg. Choh, 48000 Rawang,  
Selangor, Malaysia.  
Website : www.innoglass.com.my



**Majestic Engineering Sdn. Bhd.** (MESB), a Bumiputera majority-owned company established in 1992, specialises in Railway Engineering. Despite challenges during the late 1990s economic crisis, MESB has successfully completed various projects for clients like KTM Berhad, PETRONAS, and others. The company aims to be a premier provider, manufacturer, and supplier of railway products and services. MESB's mission is to deliver innovative, world-class railway solutions and form strategic partnerships with international companies to enhance their offerings and create value for shareholders.

Contact Details : Albukhary Awang  
Email : majestic.engineering@gmail.com  
Contact Number : +6019-228 2432

Address : No. 25 Jalan p/8, Seksyen 13, Kawasan Perindustrian  
MIEL, 43650 Bandar Baru Bangi, Selangor, Malaysia.  
Website : majesticengineering.com.my



**Malnaga Sdn. Bhd.** established in May 1982, is a leading provider of engineering solutions to the railway industry in Malaysia, Singapore, and the region. With over 40 years of experience, the company offers trackworks, track materials, rolling stock, components, and depot equipment. Malnaga also focuses on providing comprehensive MRO (Maintenance, Repair, and Overhaul) services, with operations in Malaysia, Singapore, and India, supported by over 20 renowned global partners.

Contact Details : Datuk M. Jayabalan  
Email : [mjaya@malnaga.com](mailto:mjaya@malnaga.com)  
Contact Number : +6012-338 9657

Address : Unit E-05-9 &10, Block E, Plaza No, 2, Jalan Kiara, Mont Kiara, 50480 Kuala Lumpur, Malaysia.  
Website : [www.malnaga.com.my](http://www.malnaga.com.my)



**Millennium Freight (M) Sdn. Bhd.** is a global logistics company that has experienced significant growth since its inception. Focused on evolving with technology and market demands, the company has earned long-term customer loyalty through a vision centered on client needs. By setting achievable goals and introducing operational innovations, MILLENNIUM FREIGHT remains highly competitive in the industry. Supported by dedicated teams and advanced infrastructure, the company is committed to delivering uncompromising quality service. With a successful track record, MILLENNIUM FREIGHT looks forward to an even brighter future.

Contact Details : Md Shah  
Email : [mdshah@millenniumfreight.com.my](mailto:mdshah@millenniumfreight.com.my)  
Contact Number : +603-5124 7628/30/45

Address : A122, Jalan 7, Kosmopleks, Bandar Baru Salak Tinggi, 43900 Sepang, Malaysia.  
Website : [www.millenniumfreight.com.my](http://www.millenniumfreight.com.my)



**Mayura Engineering & Consultancy Sdn. Bhd.** (MEC) began trading as Mayura Engineering on 2015 and transformed into MEC in Malaysia in 2017. MEC is providing innovation engineering solutions in entire industries. The aim was to supply a comprehensive range of top-quality bolting security system customers throughout Malaysia. With their team of trained professionals offering unmatched customer service, They have grown to six major accessible locations around Malaysia- Penang, Perak, Selangor, Johor Baharu, Sabah and Sarawak.

Contact Details : Zarrief Syamim  
Email : [zarriefsyamim@bumi.mayuraengineering.com](mailto:zarriefsyamim@bumi.mayuraengineering.com)  
Contact Number : +6013-405 9278

Address : Lebuhr Batu Nilam 1 A-9-A, 9th Floor, BBT One-The Tower (South Tower, Bandar Bukit Tinggi, 41200 Klang, Selangor, Malaysia.  
Website : [www.mayuraengineering.com](http://www.mayuraengineering.com)



**Perencana Dingin Sdn. Bhd.** specialises in turnkey projects, maintenance, and the supply of process and production equipment, particularly in Heating, Ventilation & Air Conditioning (HVAC). This includes HVAC packages, District Cooling Systems, Cooling Towers, shell & tube heat exchangers, and piping spools and skidded modules for the transportation, building, and energy industries. They are committed to delivering projects of the highest quality while adhering to international standards and local regulatory requirements. As part of our dedication to excellence, They ensure compliance with ISO 9001 quality management systems and the regulations set by the G7 Construction Industry Development Board (CIDB).

Contact Details : Azlan Muhammad  
Email : [azlan@perencana.com.my](mailto:azlan@perencana.com.my)  
Contact Number : +6012-321 1234

Address : B-02-06, Oasis Ara Damansara, Jalan PJU 1A/7A, Ara Damansara, 47301 Petaling Jaya, Selangor, Malaysia.  
Website : [www.perencana.com.my](http://www.perencana.com.my)

## ROLLING STOCK (Continued)



**Scomi Group Bhd.** is a global service provider in the oil & gas and transport solutions sectors, listed on Bursa Malaysia. With over 2,000 employees across 21 countries, Scomi offers services in drilling, marine logistics, and transport solutions, including monorail systems. The company is expanding into emerging markets like Brazil and India, while prioritising sustainability and community development.

Contact Details : -  
Email : -  
Contact Number : +603-7846 4516

Address : Lot S102, 2nd Floor, Centrepont Bandar Utama,  
No. 3 Lebuhraya Bandar Utama, Bandar Utama,  
47800 Petaling Jaya, Selangor, Malaysia.  
Website : [www.scomigroup.com.my](http://www.scomigroup.com.my)



**Teknoware** provides comprehensive lighting and interior solutions of train passengers. They specialise from LED lighting to ceiling solutions.

Contact Details : Kai Heng  
Email : [kai.heng@teknoware.com](mailto:kai.heng@teknoware.com)  
Contact Number : +6019-719 0026

Address : 26 Jalan Mega 1/1, Taman Perindustrian Nusa Cemerlang,  
79200 Iskandar Puteri, Johor, Malaysia.  
Website : [www.teknoware.com](http://www.teknoware.com)



**UMW** began in 1917 as an auto repair shop in Singapore, known as United Motor Works. It quickly became a popular destination for auto repairs and secured the distributorship for General Motors automotive parts. In 1927, the business was consolidated into United Motor Works Pte Ltd, the predecessor of today's UMW. Over the years, UMW has grown into a multimillion-dollar industrial conglomerate, with strengths in Manufacturing, Distribution, and Services, and a presence in the Automotive, Equipment, Manufacturing & Engineering, and Aerospace sectors. The company is committed to sustainability, strategic partnerships, innovation, and maintaining high-quality standards.

Contact Details : Dato Ir. Abdul Rashid Musa  
Email : [rashid.musa@umw.com.my](mailto:rashid.musa@umw.com.my)  
Contact Number : +6013-391 5899

Address : UMW HOLDINGS BERHAD, Menara UMW, Jalan Puncak,  
Off Jalan P Ramlee, 50250 Kuala Lumpur, Malaysia.  
Website : [www.umw.com.my](http://www.umw.com.my)

# SIGNALLING



**AZTI Technology Sdn. Bhd.** established on June 4, 2014, is a Malaysian technology company specialising in the research, development, and commercialisation of the Platform Intrusion Emergency Stop (PIES®) System. As the technology owner of PIES®, AZTI Technology has acquired all intellectual property rights and technical know-how through its Canadian subsidiary. The company has significantly enhanced the PIES® hardware and firmware, localised manufacturing, and is in the process of obtaining international certification. AZTI Technology holds MSC Malaysia status and is registered under ICP with TDA. The company's business scope includes research and development, business development, technical assistance, licensing of intellectual property rights, investment holding, and engineering services.

Contact Details : Lian Wah Seng  
 Email : lws@aztihsb.com  
 Contact Number : +6012-208 2335

Address : No.3-9, The Boulevard, Mid Valley City, Lingkaran Syed Putra,  
 59200 Kuala Lumpur, Malaysia.  
 Website : [www.aztigroup.com](http://www.aztigroup.com)



**CMC Engineering** has over 27 years experience in turnkey services of engineering, procurement, construction, and commissioning ("EPCC") in transportation, power & energy and telecommunications sectors. Focussing on systems technology and integration, CMCE has completed several key projects domestically including Kuala Lumpur's LRT, MRT, intercity railways and tolled highways; as well as, internationally including Vietnam HCMC MRT. Outside of transportation and telecommunications, in recent years, based on its EPCC capabilities, CMC has also expanded its business into renewable energy whereby it involves in engineering & construction of solar farms. CMC currently also owns and operates solar photovoltaic farms under the net energy metering programme in Malaysia.

Contact Details : Hazwan Alif Abdul Rahman  
 Email : Hazwan-alif.rahman@cmce.com.my  
 Contact Number : +6012-238 2619

Address : A6-3A, Jalan Selaman 1/1, Dataran Palma,  
 68000 Ampang, Selangor, Malaysia.  
 Website : [www.cmcgroup.com.my](http://www.cmcgroup.com.my)

## Global Rail

**Global Rail Sdn. Bhd.** a pioneer railway systems provider, their established in 2007 by a team of industry experts with extensive knowledge of railway systems. Our key areas of expertise include Project Management, and the Design, Engineering, Construction, and Systems Integration of Signalling, Communication, and Electrification for Railways. Their team's management, training, and coordination of technicians, including subcontractors, ensure the successful completion of systems according to the specifications required by their clientele.

Contact Details : Wilson Fan  
 Email : wilson@globalrail.com.my  
 Contact Number : +6012-251 5778

Address : No. 2, Jalan Industri Taming Mas, Taming Jaya Industry Park,  
 43300 Seri Kembangan, Selangor, Malaysia.  
 Website : [www.globalrail.com.my](http://www.globalrail.com.my)



With decades of experience under its wings, **RASMA Corporation** has transformed itself into formidable force that has successfully undertaken and delivered projects that spans from the Health Sector to Railway. Whether you present us to us complex engineering challenges or tailored and customised models, from its multi-disciplinary team works closely with you to engineer solutions for a wide range of business requirements. With an overarching goal to deliver superior solutions for all its consumers, Rasma has successfully gained a foothold in the industry and attained recognition with the regulatory bodies and clients alike.

Contact Details : YM Raja Hamzah Abidin bin  
 Datuk Seri Utama Raja Nong Chik  
 Email : hamzahabidin@rasmacorp.com  
 Contact Number : +603-7803 7037

Address : 611, Block A, Glomac Business Centre, No. 10,  
 Jalan SS 6/1, Kelana Jaya, 47301 P. Jaya, Selangor.  
 Website : [www.rasmacorp.com](http://www.rasmacorp.com)

# COMMUNICATIONS



**AIM Solutions Group Berhad (ASGB)** was founded with the vision of revolutionising traditional business practices through digitalisation, enhancing precision, convenience, and security. The company is a leader in two core areas: Digital Services and Systems Engineering. ASGB offers a wide range of services, including system design, software development, project management, and control and monitoring, along with dedicated support and maintenance. ASGB's innovative approach focuses on delivering customized integrated solutions that help clients achieve their business goals, supported by comprehensive on-site management and technical expertise.

Contact Details : Cheah Wei Kang  
Email : weikang@asgb.com.my  
Contact Number : +6019-663 5849

Address : Mezzanine Floor, Menara AIM Annex, No.3 Jalan Cempaka SD  
12/1A, Bandar Sri Damansara PJU9, 52200 Kuala Lumpur.  
Website : [www.asgb.com.my](http://www.asgb.com.my)



**D'amante (M) Sdn. Bhd.** established on 2nd August 1995, is a dynamic company specialising in high-quality, cost-effective product design and system development. The company focuses on toll system peripherals, passenger information display systems, SCADA, programmable logic controllers, and more, prioritising customer needs to ensure reliability and consistency. With a knowledgeable team and advanced technology, D'amante ensures each product is rigorously tested by highly skilled engineers certified by the Malaysia Software Testing Board (MSTB). The company fosters teamwork and innovation, aiming to create opportunities and promote healthy competition in the market, with a vision of limitless growth.

Contact Details : Zulhariz Zulkifli  
Email : zulhariz@damante.com.my  
Contact Number : +6012 614 0064

Address : Lot 3-2, Jalan Kajang Perdana 3, Kajang Perdana,  
43000 Kajang, Selangor, Malaysia.  
Website : [www.damante.com.my](http://www.damante.com.my)



**EV Dynamic Sdn. Bhd.** founded in 2006, is a leading turnkey system integrator in Malaysia, specialising in Intelligent Transportation Systems, Rail Systems & Engineering, Safe and Smart City solutions, and Healthcare solutions. The company prioritises customer satisfaction by understanding and exceeding customer needs, supported by an extensive partner network. EV Dynamic invests heavily in its human capital, with over 75% of its workforce in technical roles, enabling the company to insource most of its solution delivery requirements.

Contact Details : Carol Yap  
Email : carol.yap@evd.com.my  
Contact Number : +6012-363 8377

Address : 39, Jalan Putra Mahkota 7/7B, Putra Point Business Centre,  
Putra Heights, 47650 Subang Jaya, Selangor, Malaysia.  
Website : [www.ev-dynamic.com](http://www.ev-dynamic.com)



**Sapura** offers advanced communication technologies that improve rail transportation efficiency and safety. Their solutions include digital radio systems, fiber optic networks, and integrated platforms for real-time train service monitoring, control, and coordination. Sapura's innovative and reliable systems support seamless communication and operational performance for rail operators.

Contact Details : Yeoh Jit Shiong  
Email : jitshiong.yeoh@sapura.com.my  
Contact Number : +6012-577 0007

Address : Lot 26921, Jalan Rejang, Section 10,  
Wangsa Maju, 53300 Kuala Lumpur, Malaysia.  
Website : [www.sapura.com.my](http://www.sapura.com.my)

## WILLOWGLEN

Established in 1972, **Willowglen** specialises in providing technological solutions for diverse infrastructure, business, residential, commercial, and industrial needs. The company pioneered advanced remote monitoring and control systems in the region and continues to innovate and evolve. With a dedicated R&D center and over 400 committed staff, 70% of whom are in technical engineering, Willowglen focuses on excellence and future-forward goals. Embracing new thinking and data-driven decisions, Willowglen aims to create better systems for precision, protection, and ease of operation in an increasingly connected world.

Contact Details : Phan Vee Yee  
Email : vyphan@willowglen.com.my  
Contact Number : +6012-318 1232

Address : No. 17, Jalan 2/149B, Taman Sri Endah,  
Bandar Baru Sri Petaling, 57000 Kuala Lumpur, Malaysia.  
Website : [www.willowglen.com.my](http://www.willowglen.com.my)



**XMT Technologies**, a leading telecommunications and ICT company, is dedicated to providing creative, high-quality, and cost-effective solutions. Established in 2000 as part of a major Malaysian conglomerate, XMT has grown into an independent industry leader. The company focuses on delivering reliable, sustainable, and world-class solutions to enhance efficiency and growth. In a competitive business environment, XMT continually reinvents itself to align its innovative solutions with client needs, aiming to be the preferred technology enabler. Their vision is "bridging the future".

Contact Details : Latipah Sani  
Email : latipah@xmt.com.my  
Contact Number : +6017-878 4140

Address : Suite 2B-1-1, Plaza Sentral, Jalan Stesen Sentral 5,  
KL Sentral, 50470 Kuala Lumpur, Malaysia.  
Website : [www.xmt.com.my](http://www.xmt.com.my)



**Recogine Technology Sdn. Bhd.** was founded in 2006. Recogine Technology is an ICT enabling company that delivers intelligent transportation systems (ITS) for the transportation and security industry. Headquartered in Selangor, Malaysia Recogine Technology operates in a wide range of markets, providing end-to-end intelligent transportation & communications solutions to customers in Malaysia and globally.

Contact Details : Dr. Tay Yong Haur  
Email : yhtay@recogine.com  
Contact Number : +6016-311 2781

Address : 29-1 & 29-2, Jalan Putra Mahkota 7/8B, Putra Point Business Centre,  
Putra Heights 47650 Subang Jaya, Selangor, Malaysia.  
Website : [www.recogine.com](http://www.recogine.com)



**NSSIT**. Their core expertise covers from customized software development to hardware integration for their clients specifically in the public transport industry. They always aim to provide their solutions in the most efficient and reliable manner.

Contact Details : Syakirah  
Email : syakirah@nssit.com.my  
Contact Number : +6019-360 1855

Address : No. 17, Jalan 2/149B, Taman Sri Endah,  
Bandar Baru Sri Petaling, 57000 Kuala Lumpur, Malaysia.  
Website : [www.willowglen.com.my](http://www.willowglen.com.my)

# TRACK WORKS



**Asiakom** is a leader in the construction and railway industries in Malaysia. They believe in fostering authentic, partnershipbased collaborative relationships with their clients. Asiakom designs technically advanced railway signalling and track construction solutions customised to meet your needs. They have the capability to design, supply, install, test, and maintain the systems they provide, ensuring they meet your operational requirements and budget.

Contact Details : Kijay Kimis  
Email : kkimis@asiakom.com.my  
Contact Number : +6019-314 8749

Address : No. 102, 3rd Floor, Lorong Mamanda 2, Ampang Point,  
68000 Ampang, Selangor, Malaysia.  
Website : [www.asiakom.com.my](http://www.asiakom.com.my)



**Dhaya Maju Infrastructure (Asia) Sdn. Bhd.** established in 1996, is a leading "PKK Class A" Bumiputera and CIDB G7 Contractor in Malaysia, qualified for projects of unlimited value. The company is ISO 9001:2015 certified and has completed notable construction projects, including parts of the Central Link KLIA Expressway, Rail Link to West Port, and the Klang Valley Electrified Double Track Project (KVDT). Dhaya Maju has also expanded into property development and undertaken significant infrastructure projects in India. With a highly skilled management team and extensive industry experience, the company is poised for continued growth in Malaysia and internationally.

Contact Details : Datuk Razeek Md. Hussain  
Email : razeek.hussain@dmiagrp.com  
Contact Number : +6019-320 9320

Address : B-G-28, Block Bougainvillea, 10 Boulevard, Lebuhraya Sprint,  
PJU 6A, 47400 Petaling Jaya, Selangor, Malaysia.  
Website : [www.dmiagr.com](http://www.dmiagr.com)



**Emrail**, established in 1973 by former Malayan Railway staff, started as a small company focused on designing and manufacturing turnouts for the Malayan Railway. Over time, it expanded into broader railway engineering and construction, becoming one of Malaysia's largest private railway construction companies. Emrail's significant growth began in 1997 with the construction of Kuala Lumpur's first metro networks for the 16th Commonwealth Games. The company has since completed over 1,200 kilometers of tracks across Malaysia, India, and Indonesia.

Contact Details : Dr. Arvind Hari Narayanan  
Email : arvind@emrail.com.my  
Contact Number : +6019-351 0113

Address : No. 19-8, Block CI, Dataran Prima, Jalan PJU 1/41,  
Petaling Jaya, 47301 Selangor, Malaysia.  
Website : [www.emrail.com.my](http://www.emrail.com.my)



**Lion Pacific Sdn. Bhd.** (LPSB), founded in 1990, is a prominent Malaysian engineering and construction company specialising in telecommunications, civil engineering, railway tracks, electrical power, and transportation. The company has expanded its expertise to include turnkey development, project management, and various engineering services, becoming a leading Bumiputera contractor. Registered as a Class A contractor with PKK and Grade G7 with CIDB, and ISO 9001:2008 certified, LPSB has completed numerous significant projects for both public and private sectors. It is known for its high-quality standards, safety practices, and collaboration with key organisations like Telekom Malaysia and Tenaga Nasional Berhad.

Contact Details : Rosnah Kasim  
Email : rosnah@lionpacsm.com  
Contact Number : +6012-229 5783

Address : A-3A-3A, Block A, Ativo Plaza, No.1, Jalan PJU 9/1,  
Damansara Avenue, Bandar Sri Damansara, 52200 Kuala Lumpur.  
Website : [www.lionpacsm.com](http://www.lionpacsm.com)

## MASTRAK

Founded in November 1981, **Mastrak Sdn. Bhd.** is Malaysia's pioneering manufacturer of concrete railway sleepers and turnout bearers. The company has developed durable concrete products well-suited for long-term use in tropical conditions. Its technological collaborations include research bodies in Malaysia - such as SIRIM, CREAM, and Universiti Tun Hussein Onn Malaysia - and international collaborators - such as Abetong in Sweden, Austrak in Australia, and Grinaker Construction in South Africa. Over four decades, Mastrak has significantly contributed to Malaysia's railway infrastructure and expanded into international markets, including Singapore and Vietnam. The company's ongoing dedication to quality, innovation, and global standards underscores its role as a key player in the railway industry.

Contact Details : Eena Khalil Lim  
Email : gm@mastrak.my  
Contact Number : +6012-354 9006

Address : 7, Jalan 5/7B, Desa Pandan,  
55100 Kuala Lumpur, Malaysia.  
Website : www.mastrak.my



Established in 1999, **Trackwork & Supplies** specializes in various aspects of railway infrastructure, including trading and rail welding works. Their services range from supplying materials to completing rail projects. They undertake turnkey projects and are committed to continuously developing and improving their product solutions to meet the needs of the Malaysian railway industry. Ongoing product improvements and construction techniques for optimal performance are regular features of our operations.

Contact Details : Gabriel Goh  
Email : gabrieltws@gmail.com  
Contact Number : +6012-300 1445

Address : No. 31-5, Level 5, Dataran Prima Block F2, Jalan PJU 1/42A,  
47301 Petaling Jaya, Selangor, Malaysia.  
Website : www.trackwork.com.my



**TWA Malaysia**, established in 2009, has rapidly grown into a key player in the Malaysian railway industry, led by co-founders with over 25 years of experience. The company has gained international recognition, particularly in the Asia Pacific, and holds exclusive rights to distribute and maintain railway machinery from Plasser and Theurer. TWA Malaysia has diversified its operations into engineering solutions, construction, and manufacturing, solidifying its position as a market leader.

Contact Details : Nurul Alyaa Rima  
Email : alyaa.twam@gmail.com  
Contact Number : +603-8927 3701

Address : No. 3A-1 & 3A-2, Jalan Medan PB 3A Medan PB, Seksyen 9,  
43650 Bandar Baru Bangi, Selangor, Malaysia.  
Website : www.twam.com.my



**RC Asia Engineering Sdn. Bhd.** began as JLJY Rel Care Enterprise in 1996, providing engineering services for KTMB and contractors in railway track upgrades and rehabilitation. By 2002, it had grown to 150 personnel skilled in track engineering, leading to its incorporation as REL CARE Sdn Bhd, later renamed RC Asia Engineering.

Today, RC Asia Engineering is a leading contractor specialising in railway track engineering. With a professional management team and skilled engineers, the company has completed over 2,000 km of rail projects in Malaysia. Key projects include the East Coast Line Ballast Undercutting, Electrified Double Tracking from Ipoh to Rawang, Seremban to Gemas, and Ipoh to Padang Besar, along with upgrading wooden to concrete sleeper tracks. RC Asia is recognised as the preferred contractor for emergency and revival projects by the Ministry of Transport and KTMB.

Contact Details : Jevitha  
Email : info@rcasia.com.my  
Contact Number : +6012-7063 220

Address : No. 48, Jalan SS 22/21, Damansara Jaya, 47400 Petaling Jaya,  
Selangor, Malaysia.  
Website : www.rcasia.com.my

# ENGINEERING DESIGN & CONSULTANCY



**HSS Engineers Berhad** (HEB), established in 2015, is a leading Malaysian engineering consultancy group. Through its subsidiaries, HEB provides engineering design, project management, construction supervision, environmental services, and building information modeling. With a workforce of over 850, including a majority of engineers, the group has over 80 years of combined experience in diverse sectors such as urban infrastructure, transportation, water resources, waste management, and power generation. HEB has been involved in major projects like the Iskandar Bus Rapid Transit, MRT 1 & 2, and the East Coast Rail Link, operating from offices in Kuala Lumpur, Penang, and Chennai, India.

Contact Details : Ir. Sharifah Azlina Raja Kamal Pasmah  
Email : azlina@hss.com.my  
Contact Number : +6019-249 7958

Address : B1 (1-4) Block B, Plaza Dwtasik, No.21, Jalan 5/106,  
Bandar Sri Permaisuri, 56000 Kuala Lumpur, Malaysia.  
Website : [www.hssgroup.com.my](http://www.hssgroup.com.my)



**Infra Mobility** offers comprehensive engineering design and consultancy services for railway infrastructure projects. Their expertise covers project planning, design, and management, ensuring efficient project completion. Infra Mobility's innovative solutions enhance rail system functionality and performance, making them a trusted partner for railway infrastructure development.

Contact Details : Joel Tan  
Email : joel@inframobility.com  
Contact Number : +6016-218 5590

Address : Level 3 Block C-05-3, Setia Walk,  
47160 Pusat Bandar Puchong, Selangor, Malaysia.  
Website : [www.linkedin.com/company/infra-mobility-sdn-bhd/about/](http://www.linkedin.com/company/infra-mobility-sdn-bhd/about/)



**Khairi Consult Sdn. Bhd.** (KCSB) of Malaysia was incorporated in 1994 to provide consulting and management services related to civil engineering. In 2019, KCSB expanded its services to include mechanical and electrical engineering. KCSB is certified for Quality Management Systems (ISO 9001:2015) and Environmental Management Systems (ISO 14001:2015). As one of the leading medium-sized consulting firms in Malaysia, KCSB specialises in road and highway design and supervision.

Contact Details : Dato' Ir. Mohd Khairi Ambran  
Email : khairi1954@gmail.com  
Contact Number : +6019-222 2598

Address : No. 76, Jalan SG 4/8, Taman Sri Gombak,  
68100 Batu Caves, Selangor, Malaysia.  
Website : [www.khairiconsult.com.my](http://www.khairiconsult.com.my)



**K.L. Consult Associates Sdn. Bhd. (KLC)** is a specialised engineering consultancy service to the railway industry in Malaysia and overseas. KLC diversified to provide full range of consulting services and been engaged in the Design and Supervision of Residential, Commercial, Industrial and Infrastructure projects. KLC is regarded as the leading specialist consultant for the railway industry in Malaysia and in the region. KLC's professional services include; Design Management, Railway Engineering, Project Audit and Independent Checking Engineer, Project and Construction Management Feasibility Study. KLC's highly-qualified professional management and technical staff supported by administrative personnel combined with specialised training and overseas project experience offers state-of-the-art design technology, latest management techniques and cost-effective services to its clients.

Contact Details : Ir. Ramesh Srinivasan  
Email : ssprj@klconsult.com.my  
Contact Number : +6019-321 9201

Address : Unit 158-4-5, Kompleks Maluri, Jalan Jejaka,  
Taman Maluri, Cheras, 55100 Kuala Lumpur, Malaysia.  
Website : [www.klconsult.com](http://www.klconsult.com)



Founded during the 1997-1998 Asian Financial Crisis, **Mega Jati Consult Sdn. Bhd.** (MJCSB) was established by a group of professional engineers aiming to provide sustainable engineering excellence and create job opportunities. Over 20 years, MJCSB has grown into a leading Mechanical & Electrical consultancy firm in Malaysia, with two local branches and a workforce of over 70. The company offers consultancy services across various industries, including building services, transportation, renewable energy, and oil & gas, both locally and internationally.

Contact Details : Ir. Mazuar Bin Mohd Anuar  
Email : admin@megajaticonsult.com  
Contact Number : +603-6277 4695 / 6277 4696

Address : No. 25-2-1, Jalan Medan Putra 3 (3/62D),  
Medan Putra Business Centre, Bandar Menjalara,  
52200 Kepong, Kuala Lumpur, Malaysia.  
Website : www.megajaticonsult.com



Founded in January 2018, **Mutiara Perlis** is a joint venture between Mutiara Infra Sdn Bhd and Menteri Besar Inc. (Perlis), exemplifying a successful public-private partnership (PPP) in Malaysia. Leveraging Perlis' strategic location as the northernmost state in Peninsular Malaysia, bordering Thailand and close to Langkawi, the company focuses on enhancing maritime and rail infrastructure. Mutiara Perlis aims to boost the local economy, improve social well-being, and strengthen Malaysia's regional logistical position in Asia.

Contact Details : Nur Sabrina Izzati Binti Ahmad Norhisham  
Email : sabrina@mutiaraperlis.com  
Contact Number : +6016-214 1312

Address : Level 10, Premier Suite, Menara 1MK, 1, Jalan Kiara,  
Mont Kiara, 50480 Kuala Lumpur, Malaysia.  
Website : -



**Opus Consultants**, a leading engineering and asset management firm in Malaysia, boasts over 30 years of experience and has managed projects worth over RM 100 billion. Known for its excellence in transportation and built environment projects, the firm has significantly impacted Malaysia's infrastructure with major projects like the North-South Expressway and LRT extensions. Looking ahead, Opus Consultants is focusing on expanding infrastructure development in East Malaysia, evidenced by its recent joint venture with PPES Consults Sdn. Bhd., a subsidiary of the Sarawak Economic Development Corporation (SEDC).

Contact Details : Ir. Dr. Tony Chan  
Email : hefleen.nordin@opusbhd.com  
Contact Number : +603-2725 6688

Address : 5<sup>TH</sup> Floor Menara 2, Faber Towers, Jalan Desa Bahagia,  
Taman Desa, 58100 Kuala Lumpur, Malaysia.  
Website : www.uemedgenta.com



**MDS Consultancy** is a boutique consultancy firm based in Petaling Jaya, Malaysia. They specialise in providing traffic, transport, and logistics to a unique set of private and government clients. Their boutique nature allows senior expert consultants and directors directly involved with their clients. Their culture is progressive and they promote regular and timely communication.

Contact Details : Nur Sabrina Izzati Binti Ahmad Norhisham  
Email : Info@mdsconsultancy.com  
Contact Number : +603 6141 3042

Address : Menara Mitraland, D-01-01, Menara Mitraland,  
13A, Jalan PJU 5/1, Kota Damansara, 47810 P. Jaya.  
Website : www.mdsconsultancy.com

## ENGINEERING DESIGN & CONSULTANCY



**Interfleet Rail Engineering & Consulting.** Their expert team brings a wealth of experience, ensuring that every project benefits from innovative solutions and industry-leading practices. From conceptualization to implementation, they take pride in delivering services that not only meet but exceed the highest standards.

Contact Details : Nur Ilyani Wan  
Email : nurilyani@irecsb.com  
Contact Number : +603-4266 5917

Address : Unit 22.1, Level 22, Surian Tower, No.1, Jalan PJU 7/3,  
Mutiara Damansara, 47810 Petaling Jaya, Selangor, Malaysia.  
Website : [www.interfleetrail.com](http://www.interfleetrail.com)

## POWER & ELECTRIFICATION



**PESTECH Technology** delivers Power Plant Automation & Electrification Solutions and Railway System work packages including Rail Electrification, Signalling & Communication systems. They are also executing projects in the railway sector focusing on the mainline network. Their solution offering covers system work packages including electrification, signalling & communication. They own 60 different types of plant & machineries mainly catering for railway electrification works. The plant & machineries are sufficient to carry out 300 – 500km of track distance of project at one time.

Contact Details : Paismanathan Govindasamy  
Email : paismanathan@pestech-technology.com  
Contact Number : +6012-393 3234

Address : B2-8-01, Block B2, Meritus @ Oasis Corporate Park,  
No 2, Jalan PJU 1A/2, Ara Damansara,  
47301 Petaling Jaya, Selangor, Malaysia  
Website : [www.pestech-technology.com](http://www.pestech-technology.com)



**VLP Engineering** specialists in Lightning and Surge Protection Systems. They are the leading sole distributor and installer for MARSA products. MARSA products are Malaysian products manufactured at Subang Bestari, Selangor, Malaysia. They also provide solutions in other technical services such as Lightning Protection Systems, Electrical Project Management, and Troubleshooting related to lightning surges. MARSA products have been in the market for more than 10 years. The Research Development Team (R&D) of Marsa Technology Sdn Bhd continuously innovates products to achieve the demands of clients and can withstand

spectacular lightning strikes in Malaysia. MARSA products can be considered a top-notch surge protector device in Malaysia in terms of reliability, functionality, durability, and reasonable and affordable prices. R&D team had worked together with SIRIM and TELEKOM researcher. All MARSA products have been approved and tested by SIRIM according to the MS IEC 61643-1, MS IEC 61643-11 and MS IEC 61643-12.

Contact Details : Khair Salleh  
Email : [vlpengengineering@yahoo.com](mailto:vlpengengineering@yahoo.com)  
Contact Number : +6012-393 3234

Address : No. 30, Jalan PJU 10/10D, Saujana Damansara,  
47830 Petaling Jaya, Selangor, Malaysia.  
Website : [www.vlpengineering.com](http://www.vlpengineering.com)



**Info-matic Power Sdn. Bhd.,** registered under number 535891-D, was founded by Nik Zokipli Nik Hussin in 1989. Today, the company is the leading Bumiputra firm in Malaysia specialising in manufacturing and providing comprehensive UPS products and solutions. Our goal is to instill client satisfaction by consistently delivering quality results through experienced and qualified personnel.

Contact Details : Nik Zokipli Nik Husin  
Email : [nikzokipli@imp-ups.com.my](mailto:nikzokipli@imp-ups.com.my)  
Contact Number : +6019-282 2555

Address : No. 5, Jalan 2/27e Seksyen 10 Wangsa Maju, Wangsa Maju,  
53300 Kuala Lumpur, Malaysia.  
Website : [www.imp-ups.com.my](http://www.imp-ups.com.my)



**Global Lightning Technologies (M) Sdn. Bhd. (GLT)**, established to address issues caused by lightning strikes and electrical disturbances, specialises in high-quality lightning protection solutions across various sectors in Malaysia. The company offers tailored protection for telecom structures, data centers, communication systems, industrial processes, defense, aviation, intelligent buildings, telephone systems, rail signalling, oil and gas, ports, utilities, and commercial construction. GLT provides comprehensive services including product supply, problem-solving, contract management, installation, and custom design. Committed to delivering total lightning and grounding protection solutions, GLT integrates expertise and technology to meet diverse client needs with innovative design and adherence to standard guidelines.

Contact Details : Hanita Mior  
Email : [hanita@gltm.com.my](mailto:hanita@gltm.com.my)  
Contact Number : +6012-261 0816

Address : No. 36, Jalan TS 6/9, Taman Industri Subang,  
47600 Subang Jaya, Selangor, Malaysia.  
Website : [www.gltm.com.my](http://www.gltm.com.my)



**X Rails System.** Our team is committed to delivering high-performance solutions, materials, and services for the railway industry. We simplify railway maintenance with reliable, high-quality services, offering quick and efficient support. Their expertise covers Overhead Catenary Systems (OCS), Traction Power Systems (TPS), skilled manpower supply, railway parts and materials, railway electrification design, testing and commissioning. Additionally, They provide Independent Validation and Testing Engineer (IVTE) design review services for the Power Supply and Distribution System (PSDS) package.

Contact Details : Fakriz Khalib  
Email : [fakriz.khalib@xrails.my](mailto:fakriz.khalib@xrails.my)  
Contact Number : +6012-226 6930

Address : No.8 JPP 3/7, Desa Pinggiran Putra, 43000 Kajang,  
Selangor, Malaysia.  
Website : [www.xrails.my](http://www.xrails.my)



**YFY Engineering Sdn. Bhd.** was established in August 2014 and incorporated in May 2016. Based in Shah Alam, Selangor, the company has a workforce of approximately 15 employees, 95% of whom are technical professionals. As a Bumiputera status company, YFY Engineering provides material and manpower supply, engineering, installation, and construction services for projects in the Oil & Gas, Railway, and Building industries, including maintenance programs. The company boasts over 12 years of industry experience.

Contact Details : Maryam  
Email : [maryam@yfyengineering.com](mailto:maryam@yfyengineering.com)  
Contact Number : +6012-744 7057

Address : Bandar Hill Park, No. 21, Jalan Hillpark Niaga 9/2,  
Bandar Saujana Utama, 423000 Puncak Alam, Selangor.  
Website : [www.yfyengineering.com](http://www.yfyengineering.com)



**Reltech Ventures Sdn. Bhd.** (formerly known as W.E Engineering Sdn. Bhd.) was set up by professional engineers to provide service to Malaysia electricity supply industry. Reltech Ventures has been doing business with Tenaga Nasional Berhad for more than 20 years as an electrical contractor. As the company broadens, the company also broadens the range of it's clients, including Prasarana and RapidKL for operation and maintenance of LRT and MRT stations.

Contact Details : Norida Rizan  
Email : [noridarizan@reltech.com.my](mailto:noridarizan@reltech.com.my)  
Contact Number : +6013-374 4512

Address : No.29, Jalan 15/23, Taman Perindustrian Tiong Nam,  
Seksyen 15, 40200 Shah Alam, Selangor, Malaysia.  
Website : [www.reltechventures.com](http://www.reltechventures.com)

# SYSTEMS INTEGRATOR



**Berjaya Rail** aspires to be a global rail developer, enhancing connectivity through innovative and sustainable rail solutions. Their mission is to deliver a sustainable rail ecosystem that unlocks business value globally. They focus on advancing High-Speed Rail (HSR) projects like KL-SG HSR, developing integrated rail solutions, and driving transit-oriented development. Their expertise includes project planning and delivery strategic asset management, predictive maintenance, and creating vibrant residential and commercial properties, integrated hotels, and resorts. They enhance user experience through Mobility as a Service and tourism initiatives while fostering synergistic partnerships in global forums and rail communities. Together, we aim for excellence in rail infrastructure and services.

Contact Details : Harry Lai  
Email : [harry.lai@berjaya.com.my](mailto:harry.lai@berjaya.com.my)  
Contact Number : +6010-505 2080

Address : Level 12, Berjaya Times Square, No.1, Jalan Imbi,  
55100 Kuala Lumpur, Malaysia.  
Website : [www.berjaya.com](http://www.berjaya.com)



**IJM Construction** began as a daring dream of a group of civil engineers who were ahead of their time. Formed in 1983 from a merger of three medium-sized local construction companies—IGB Construction Sdn Bhd, Jurutama Sdn Bhd, and Mudajaya Sdn Bhd—IJM was established to compete with well-capitalized foreign players entering the growing Malaysian construction industry. In 2008, IJM acquired the Road Builder Group, enhancing its position as one of the country's largest builders. Now celebrating almost four decades of success, IJM has expanded its footprint globally. It has earned recognition as a reputable Malaysian conglomerate, committed to delivering inspired solutions to its business partners and customers every day.

Contact Details : Dato' Indera Ir. Zohari Sulaiman  
Email : [zohari@ijm.com](mailto:zohari@ijm.com)  
Contact Number : +6019-337 1155

Address : Wisma IJM, Jalan Yong Shook Lin,  
46050 Petaling Jaya, Selangor, Malaysia.  
Website : [www.ijm.com](http://www.ijm.com)



**MMC Engineering Sdn. Bhd.** is one of Malaysia's leading multi-disciplinary engineering and construction companies, offering a broad spectrum of services that include procurement and project management, civil and structural construction, mechanical and electrical installation, specialized engineering construction, heavy engineering, and highway and major infrastructure works.

Contact Details : Ariff Iskandar Rosli  
Email : [ariff.rosli@mmce.com.my](mailto:ariff.rosli@mmce.com.my)  
Contact Number : +6012-953 1612

Address : Level 23, Wisma Zelan, Jalan Tasik Permaisuri 2,  
Bandar Tun Razak, 56000 Cheras, Kuala Lumpur, Malaysia.  
Website : [www.mmce.com.my](http://www.mmce.com.my)

# AUTOMATED FARE COLLECTION



**IRIS Corporation Berhad**, a technology integrator and innovator known for its innovative, relevant, intelligent, and secure solutions for trusted identification, has over 25 years of experience in developing ePassports and multi-application eID cards. From manufacturing smart cards and identity documents to designing the devices needed to authenticate them, including the world's first e-Passport and multi-application national EID card, we add trust, simplicity, and value to a growing portfolio of discerning clients in 34 countries across the globe.

Contact Details : Juan Anthony  
Email : [juan@iris.com.my](mailto:juan@iris.com.my)  
Contact Number : +6012-857 7710

Address : IRIS Smart Technology, Complex Technology Park Malaysia,  
Bukit Jalil, 57000 Kuala Lumpur, Malaysia.  
Website : [www.iris.com.my](http://www.iris.com.my)



Founded in Malaysia in 2011, **Tech-Store Malaysia Sdn. Bhd.** has aimed to modernise security, communication, and automation solutions. The company focuses on advanced control room and monitoring systems, investing in local talent to deliver innovative and tailored solutions. Tech-Store Malaysia has successfully implemented state-of-the-art systems in various sectors, including public transportation, banking, and utilities, establishing a strong regional presence. In 2024, Tech-Store Malaysia acquired SeeTec Asia Sdn Bhd, creating the TechStore Group. This acquisition enhances their capabilities in IT services and video management systems, further advancing their role in Malaysia's transportation and security monitoring industries while reducing reliance on imported solutions.

Contact Details : Eugene Tan  
Email : [eugene.tan@ieh.com.my](mailto:eugene.tan@ieh.com.my)  
Contact Number : +6012-391 7272

Address : No. 20 Puchong Gateway, Jalan Suria Puchong 6,  
Pusat Perniagaan Suria Puchong, 47100 Puchong,  
Selangor, Malaysia.  
Website : [www.tech-store.com.my](http://www.tech-store.com.my)



Their story began in 1994 when UEM established **TERAS Technology** as its technology-focused solution provider. Within the first five years, They implemented Malaysia's first fully integrated toll collection system, enabling cashless payments at toll plazas across the industry, and developed and deployed the SmartTAG payment solution. TERAS has since grown to become the largest toll collection system provider in Malaysia, handling over one billion trips per year with its solutions.

Contact Details : Muhammad Hadzrin Bin Mahdi  
Email : [hadzrin.mahdi@teras.com.my](mailto:hadzrin.mahdi@teras.com.my)  
Contact Number : +6019-667 6156

Address : Annex 3, Persada PLUS, Persimpangan Bertingkat Subang,  
KM15, Lebuhraya Baru Lembah Klang, 47301 Petaling Jaya,  
Selangor, Malaysia.  
Website : [www.teras.com.my](http://www.teras.com.my)

## TRAIN SIMULATOR



**Xcel Itech Sdn. Bhd.**, based in Kajang, Malaysia, operates in the Computer and Computer Peripheral Equipment and Software Merchant Wholesalers industry. The company was founded on February 26, 2004. In 2022, Xcel Itech saw a significant financial performance improvement, with net sales revenue increasing by 56.04% and total assets growing by 57.04%. The net profit margin for the company in 2022 also improved, reflecting overall positive growth.

Contact Details : Badrul Hisham  
Email : badrulhisham@xcelitech.biz  
Contact Number : +6019-357 1972

Address : 13, Jalan Putra 2, Taman Sepakat Indah 2, 43000 Kajang,  
Selangor, Malaysia.  
Website : [www.xcelitech.my](http://www.xcelitech.my)

## CITY METRO PARTNER



**Sarawak Metro Sdn. Bhd.**, a subsidiary of the Sarawak Economic Development Corporation (SEDC), is tasked with transforming the public road transport system in major urban areas. Their goal is to offer urban commuters a safer, more reliable, convenient, comfortable, and eco-friendly mode of transportation. Currently, Sarawak Metro is implementing the Kuching Urban Transportation System (KUTS) project, overseen by the Ministry of Transport Sarawak, to reduce traffic congestion and boost economic growth. The project's backbone is the hydrogen-powered Autonomous Rapid Transit (ART), supported by a network of feeder buses providing First and Last Mile Connectivity in Greater Kuching.

Contact Details : Fahri Yakup  
Email : [info@mysarawakmetro.com](mailto:info@mysarawakmetro.com)  
Contact Number : +6017-802 7455

Address : 3 - 11 Floor Menara SEDC, Lot 2878 The Isthmus,  
Off Jalan Bako 93050, Kuching, Sarawak, Malaysia.  
Website : [www.mysarawakmetro.com](http://www.mysarawakmetro.com)

## STRATEGIC PARTNER



Huawei is a leading global provider of information and communications technology (ICT) infrastructure and smart devices. They have 207,000 employees and operate in over 170 countries and regions, serving more than three billion people around the world. They are committed to bringing digital to every person, home and organization for a fully connected, intelligent world.

Contact Details : Raymond Anthony  
Email : [anthony.raymond@huawei.com](mailto:anthony.raymond@huawei.com)  
Contact Number : +6012-633 0805

Address : Level 32, Integra Tower, The Intermark, 348,  
Jalan Tun Razak, 50400 Kuala Lumpur, Malaysia.  
Website : [www.huawei.com/my/](http://www.huawei.com/my/)

**Rail System's Supply Chain in Malaysia**

**Our PRODUCTS  
Malaysian Made  
with Pride** 



## Track Works, Construction And Rehabilitation



Design and build of rail tracks and associated civil works for intercity and urban rail. Present operations in Malaysia, India and Indonesia. Past experience include medium-speed rail system and mass rapid transit rail system totalling 1100km throughout the last 20 years.



Dhaya Maju Infrastructure (Asia) Sdn Berhad specialises in track works upgrading and rehabilitation, including the design and construction of railway structures. Their expertise extends to signalling and communication systems, electrification works, and comprehensive building and infrastructure development. We also focus on environmental works and engineering systems, ensuring Malaysia's rail network is modern, efficient, and sustainable.



Experienced in-house expertise to tackle any magnitude of railway works; track works, construction of bridges with pile foundation and pre-stressed concrete girders, railway signalling works and railway overhead electrical traction works, road works.



## Concrete Sleepers & Bearers



Mastrak is supplying turnout bearers to the Jurong Region Line (JRL), Singapore's seventh MRT line. JRL which will serve the western part of Singapore, slated to be the largest commercial hub in future. JRL comprises 24km of track, with 24 stations including 3 interchange stations, and is expected to be completed in 2029. The bearer supply involves both shallow depth ballasted and anchor bolt non-ballasted slab types.

## Rolling Stock - Design, Engineering, and Assembly, Overhaul, Refurbishment and Rehabilitation



HARTASUMA is a leading rolling stock manufacturing and maintenance company in Malaysia where we design, build and deliver mobility solutions. Another attested expertise of HARTASUMA is the 'Midlife Refurbishment' (MLR) of used coaches, whereby a new lease of life is accorded by replacing existing components and integrating new ones. HARTASUMA strives to position itself at the forefront of new technologies to respond to the growing demand for safer, more efficient and green transport solutions.



## Train Composite Components Manufacturing



Design, manufactured and supplied composite panels for the Mumbai and KL Monorail projects in 2009 & 2012 respectively. The contract involves both interior aesthetic panels and exterior structural panels. These panels comply to NFPA 130 & BS 6853 fire, smoke and toxicity (FST) requirements for railway components.



Design, manufacture and installation of composite products for MRT, utilisation of advanced composite materials in design, manufacture and installation of architectural structures.



## Rolling Stock Interior System Provider



A leading company in rolling stock's interior systems, electrical controlling systems and vehicle equipment which cover over 2000 series of products for high-speed trains, metro, LRV and ordinary rail passenger cars.



## Rail Lubricant System



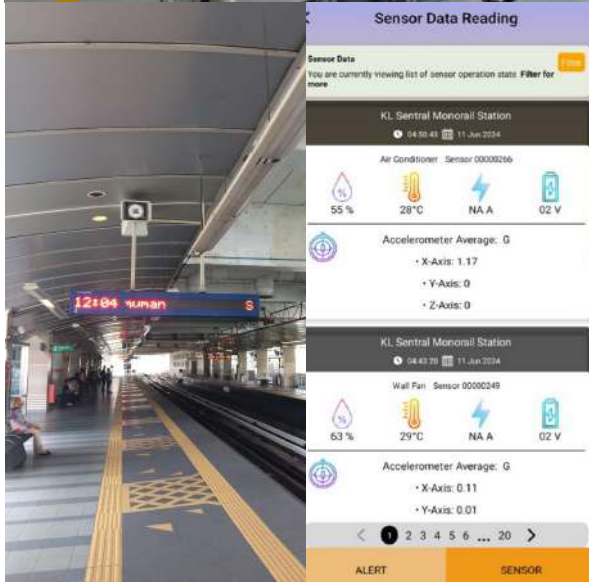
Amantronic provides sustainable solutions to the Malaysian railway industry; specialising in Rolling Stock systems, Condition Based Maintenance and Friction Management solutions.



## Rolling Stock Air-Conditioner



Specialised in turnkey project, maintenance and supplying production equipment especially related to heating, ventilation & air-conditioning (HVAC)



## Passenger Information Display System



**D'AMANTE (M) SDN BHD**  
Your Technology Solution Provider

Passenger Information Display System (PIDS) is a locally designed system to cater for Train transportation solutions in Malaysia as well as internationally. The system is tested by a Tester who is qualified by the International Software Testing Qualification Board. Easy integration with other systems such as SCADA, PA, Signalling Systems and Master Clock. The organisation has developers and engineers highly experienced in various methods of integration.



Specialising as an innovative solution provider for the transport industry, Recogine Technology leverages AIoT, analytics platforms, and maintenance management systems, alongside Passenger Information Display Systems (PIDS). Recogine's offerings include a comprehensive passenger information display system, an intelligent sensing and analytics platform, and a computerised maintenance management system (CMMS) designed specifically for the railway industry. This integration of advanced technologies ensures enhanced operational efficiency and improved passenger experiences across railway networks.



## ■ Design and Project Management Solution



Expertise in providing total design and project management solution with the support of 70 experienced workforces and 8 professional engineers, to achieve and deliver cost effective, efficient and sustainable M&E engineering services in railway industry.

## ■ The Next Revolution of Urban Transportation



Aims to create a more efficient, sustainable, and user-friendly rail system that meets the growing demands of urban populations. With the advent of Artificial Intelligence and Smart Mobility solutions and systems, travel times can be drastically reduce and operational efficiency can be increased whilst enhancing passenger experience in urban transportation.



Vast experience in 'design and build' of large-scale infrastructure projects including railways and related rail systems. Significant track record in the construction of LRT, MRT and Monorail guideways and stations, EMU depot Seremban and KTMB main workshop Batu Gajah complete with the installation of track, power supply, communication, operations and maintenance equipment, ongoing ART depot for Sarawak Metro, and ongoing Aerotrain turnkey project which includes GoA4 trains, guideway beams, driverless CBTC singalling and other operational systems at KLIA. Their aim is to provide innovative rail solutions with seamless connectivity and user-friendly transportation systems to enhance the travel experience.



Drawing from their proven track record in delivering large-scale infrastructure projects, MMC Engineering specialises in providing comprehensive railway solutions and integration. Their goal is to drive sustainable and efficient mobility, enhance urban connectivity, and elevate the commuter experience through innovative, cost-effective, and future-ready transit networks.

## ■ Rail Signalling



Experience in turnkey services of engineering, procurement, construction, and commissioning ("EPCC") in transportation, power & energy and telecommunications sectors. Focussing on systems technology and integration, CMCE has completed several key projects domestically including Kuala Lumpur's LRT, MRT, intercity railways and tolled highways; as well as, internationally including Vietnam HCMC MRT.



## Platform Intrusion Emergency Stop



State-of-the-art Platform Intrusion Emergency Stop System (PIES) which is a flexible mounted sensor panel located between running rail in front of a platform and attached to a proprietary Strain-sensitive cable, which develops a circuitry to eliminate environmental effects whilst detecting human intrusion.



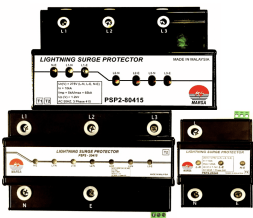
## Scada System

**WILLOWGLEN**

Specialised in design, engineering and implementation of system integration, communication and security surveillance for remote control and monitoring of infrastructure, process equipment and building facilities.



## Lightning Protection and Earthing System



Experience in specialising works related to Lightning Protection System and Surge Protection System for railway. The leading sole distributor and installer for the MARSa electrical device products.

## Backup Power Solutions



A leading company in manufacturing UPS system for rail. The products and solutions center around the area of Power protection equipment, UPS system, battery, inverter, data center preparation, precision aircond, renewable energy and LED lighting.



## Railway Machinery & Maintenance



Supplier of new on-track maintenance machinery, small maintenance machinery, locomotive, coaches, tools and spare parts. Experience in maintenance of various mechanised machines such as the ballast regulator, track and catenary recording car. We also offers operator training on the 09-3D tamping simulator, in connection with an off-board ALC.



## Automated Fare Collection



## Train Simulator



Design, supply, install, test, and commission the Signalling & Train Control System (S&TCS) and Intrusion Preventive System (IPS) for the 38-kilometer LRT3 line in Greater Kuala Lumpur. Commissioned by MRCB/SULSB for Prasarana Malaysia Berhad, the project will feature a Grade of Automation 4 (GoA4) system and advanced IPS.



The company specialises in the development of advanced train simulators. The area of expertise is the development of simulation experiences that are both immersive and highly realistic, to improve the training of railway operators, engineers, and maintenance personnel. The company's simulators are equipped with cutting-edge technology, such as real-time data processing, 3D visualization, and precise train systems and operations modeling. We address the industry's requirement for secure and efficient training tools by providing customisable solutions that replicate real-world railway environments. This ensures that personnel are adequately equipped to handle a variety of operational scenarios, from daily operations to emergencies.



Design, supply, install, test, and commission the Signalling & Train Control System (S&TCS) and Intrusion Preventive System (IPS) for the 38-kilometer LRT3 line in Greater Kuala Lumpur. Commissioned by MRCB/SULSB for Prasarana Malaysia Berhad, the project will feature a Grade of Automation 4 (GoA4) system and advanced IPS.

# COME & JOIN US

We facilitate and empower members and partners through nurturing, expanding, and building high technology capacity of the Malaysian rail industrial ecosystem by creating opportunities and building competencies.

## Membership Structure

### TYPES OF MEMBERS

#### Permanent Members

##### Criteria:

- ▶ Government, Government Agencies, Rail Operators, Corporate Organisations, Public Sector, Academia, Research Institute
- ▶ Malaysia and International

#### Associate Members

##### Eligibility Requirement Criteria:

- ▶ Non-Malaysian Controlled Company (Foreign)
- ▶ Registered Company in Malaysia
- ▶ The company must be doing work related to rail product manufacturing and services and/or its supporting industries

#### Ordinary Members

##### Eligibility Requirement Criteria:

- ▶ Local equity/shareholding must be 51% or more;
- ▶ At least 70% of Senior Management and Executives are Malaysia Citizens;
- ▶ The company must be doing work related to the rail industry, products, services and / or its supporting industry

# EDITORIAL TEAM

**Datuk Dr. Mohd Yusoff Sulaiman**

yusoff@maric.my



**Farahaiza Amin**

farahaiza@maric.my



**Ammar Abd Rahim**

ammar@maric.my



**Haniff Ghazali**

haniff.ghazali@dmiagrp.com



**Nik Sufini Nik Mohamed**

sufini@might.org.my



**Kamarulfadillah Sutling**

kamal@maric.my



**Zulhamizan Zuhairi**

mizan@maric.my



# Acknowledgements

We would like to express our appreciation towards Railway Assets Corporation (RAC) and Malaysian Industry-Government Group for High Technology (MIGHT) for their support.



## Railway Assets Corporation (RAC)

Railway Assets Corporation (RAC) is a Federal Statutory Body under the Ministry of Transport, Malaysia. Established under the Railways Act 1991 (Act 463), RAC began full operations as an organisation on August 1, 1992. Following the enactment of this Act, all railway assets previously managed by Keretapi Tanah Melayu (KTM) and railway lands under the Federal Land Commissioner (PTP) were vested in RAC, while railway service operations were handled by its successor company, Keretapi Tanah Melayu Berhad (KTMB).

The corporation's role is to manage and strategically plan the business of converting railway assets into valuable properties capable of generating continuous revenue for the Government. In line with this role, commercially viable railway assets have been leased or rented in accordance with Section 89(8) of the Railways Act 1991, with the revenue generated from these activities are being utilised to perform monitoring, maintenance, and upgrades of railway facilities and infrastructure.



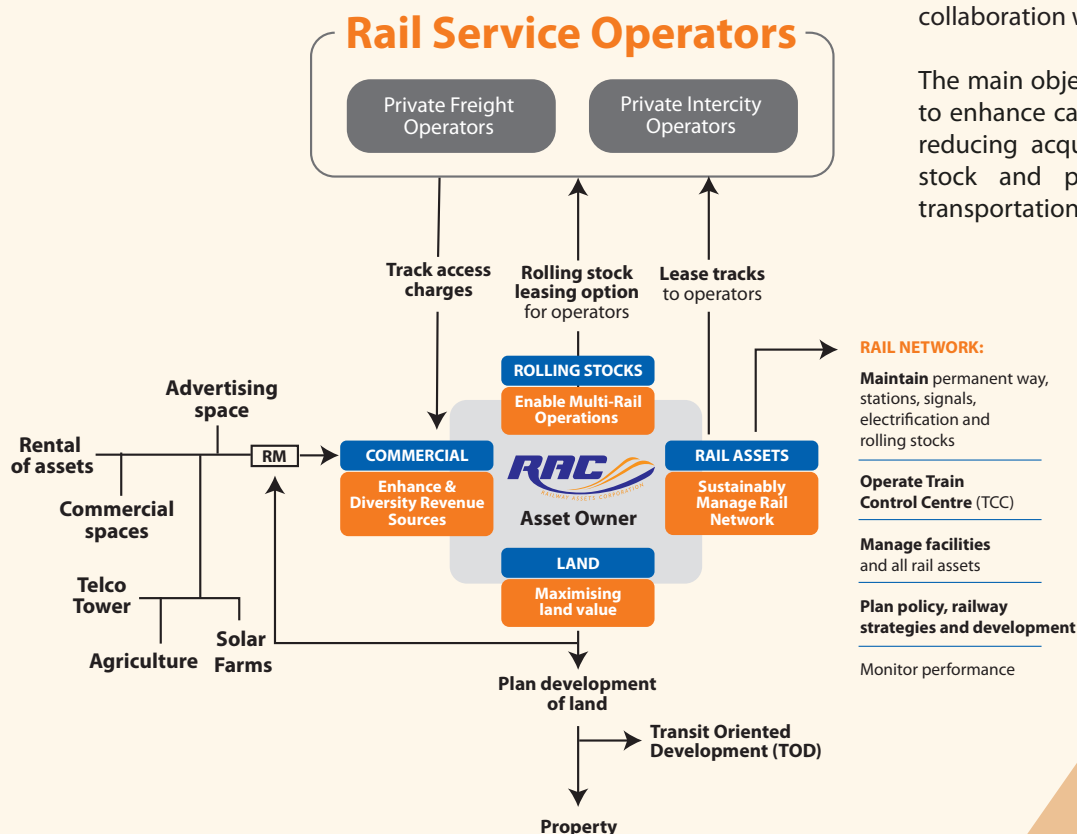
## RAIL INITIATIVES

In advocating the Road to Rail vision promoted by Ministry of Transport Malaysia and to meet the increasing demand for cargo transportation, RAC has undertaken two main initiatives through the Request for Proposal (RFP) method as follows:

- 1 The strategic acquisition of 44 locomotives and 246 wagons for cargo and logistics operations.
- 2 Development of 6 Cargo Hub Terminals near railway stations at Behrang, Merapoh, Pasir Gudang, Mengkibol, Pulau Sebang, and Senawang.

Locomotive repairs and the provision of high-capacity wagons are being undertaken to meet the high demand for cargo transportation. In this regard, RAC has introduced an initiative known as the Rolling Stock Strategy (RSS) in collaboration with private companies.

The main objective of the above initiative is to enhance cargo operations in Malaysia by reducing acquisition costs for new rolling stock and providing a sustainable rail transportation system.





MIGHT was established to explore business opportunities for Malaysia through the strategic leveraging of technology.

Its primary role is to build and drive partnerships in technology by serving as a consensus-building platform between the private and public sectors. It also provides strategic advice and alliances to guide high-technology initiatives, capacity building through policy interventions, as well as flagship programmes and strategies for the country.

MIGHT focuses on market intelligence initiatives, utilising foresight practices and methodologies to identify technology and business opportunities.

The organisation is governed by a Board of Directors, led by Joint Chairmanship between prominent private sector figures and the Science Advisor to the Prime Minister.

Built on the strength of partnerships with over 100 members and partners, both local and international, from industry, government, and academia, MIGHT facilitates and empowers the success of its members and partners by nurturing, expanding, and enhancing the high-technology capacity of Malaysia's ecosystem. This is achieved through the creation of opportunities, the development of competencies, and the localization of R&D solutions for growth, as well as the cultivation of talent for the future.



# Notes

# Notes

# Notes