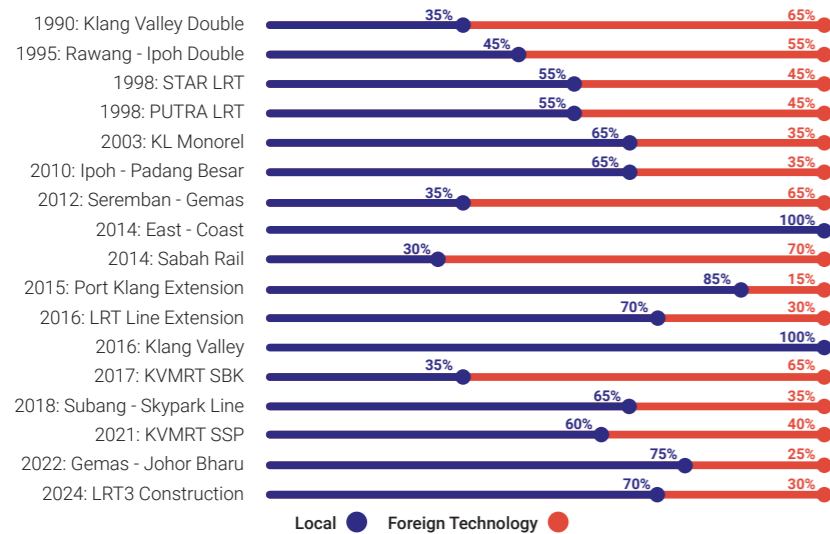


HISTORY OF RAIL DEVELOPMENT IN MALAYSIA

The National Land Public Transport Master Plan (NLPTMP) has set a target of 40% for people to commute via public transport by 2030. Nationwide, there are up to 1,601km of railway tracks and some 27% of the distance is zigzagging within the Klang Valley. By 2026, it is estimated that the rail development would cover up to 2,766km across the states in Peninsular Malaysia with up to 421 railway stations in total. At present, 10 rail lines including the KL International Airport Express and one Bus Rapid Transit (BRT) line are servicing the Klang Valley.

MARIC members combined have contributed about 55% in overall rail system engineering projects which include Klang Valley Double Tracks, Rawang-Ipoh double tracks, Putra LRT, STAR LRT, KL Monorails, Ipoh-Padang Besar Double Tracks, LRT Line Extension Project for Ampang and Kelana Jaya lines, Seremban Gemas Double Tracks, Gemas - Tumpat Rail Rehabilitation, and many more. These projects cover signalling, communications, electrifications, tracks, ticketing and rolling stock.

SYSTEMS ENGINEERING WORK PORTIONS IN MODERN ELECTRIC TRAIN ERA 1990-2020



Sources: i). National Land Public Transport Master Plan, APAD ii). Ministry of Transport Malaysia, MOT

ABOUT MALAYSIA RAIL INDUSTRY CORPORATION (MARIC)

MARIC is an industry-led platform to promote coordination and integration among Malaysian rail players. It was established with the function to support and represent the voice of Malaysian rail industry players.

OUR MISSION

To promote the development of the rail industry and increase the visibility of companies and their competencies.

OUR OBJECTIVES



To support government policies with regards to national rail industry development



To maximize the benefits from government investment to the local rail and its supporting industries



To be the focal point for rail industry engagement in Malaysia



To be the focal point in the strategic development of human capital, technology and supply chain.

OUR COMMITTEE

The committee is governed by the Board of Trustees that consist of key players in the rail industry. The committee brings together years of experience, industry knowledge and strong linkages with the relevant Government Ministries & Agencies.



Datuk Dr. Mohd Yusoff Suleiman
President



Haniff Ghazali
Honorary Secretary



Adzlan Basir
Honorary Treasury



Timothy John
Funding & Incentive



Committee Council
Nur Zakri Zakaria



Fan Boon Heng
Business Development



Paimanathan Govindasamy
Human Capital Development



Lian Wah Seng
Committee Council



Mansor Tahir
Commonality & Standard



Datuk Mohamed Razeek Md Hussain
Committee Council



Eugene Tan
Committee Council



Dr. Arvind Hari Narayanan
Membership



Datuk Dr. Abdul Rahman Abdul Halim
Committee Council



Nor Adha Yahya
Committee Council

OUR KEY PRODUCTS, SOLUTIONS & TECHNOLOGIES



TRACK WORKS, CONSTRUCTION AND REHABILITATION

Track installation works, signalling and systems, hydropower projects, telecommunications, infrastructure development, mechanical and electrical works, civil construction and power utilities works.



TRACK WORKS, CONSTRUCTION AND REHABILITATION

Track works upgrading and rehabilitation of track structure, Design and Built, Signalling and Communication, Electrification Works, Building Works, Infrastructure Development, Environmental Works and Engineering System.



PLATFORM INTRUSION EMERGENCY STOP

State-of-the-art Platform Intrusion Emergency Stop System (PIES) which is a flexible mounted sensor panel located between running rail in front of a platform and attached to a proprietary strain sensitive cable, which develops a circuitry to eliminate environmental effects whilst detecting human intrusion.



TRAIN ASSEMBLY & MANUFACTURING

Mid-life refurbishment program for 68 cars of Innovia Metro 200, and final assembly of new 56 cars of Innovia Metro 300 (in consortium with Bombardier Transportation) both for Prasarana Malaysia Berhad.



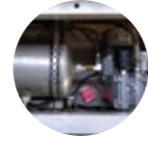
TRAIN COMPOSITES COMPONENTS MANUFACTURING

Design, manufacture and supply of composite panels i.e. interior aesthetic panels and exterior structural panels. The panels comply to NFPA 130 & BS 6853 fire, smoke and toxicity (FST) requirements for railway components.



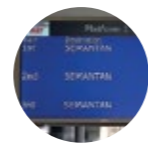
TRAIN COMPOSITES COMPONENTS MANUFACTURING

Design, manufacture and installation of composite products for MRT, utilisation of advanced composite materials in design, manufacture and installation of architectural structures.



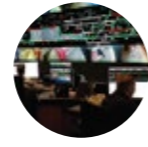
RAIL LUBRICANT SYSTEM

Sustainable solutions to the Malaysian railway industry and specialising in railway Maintenance, Repair and Overhaul (MRO). Pioneer in Rail Lubricant Systems for train operators and manufacturers in South East Asia.



PASSENGER INFORMATION DISPLAY SYSTEM

Integrated text messages and current time/countdown display, mid steel sheet coated anti-rust with high resistive coat and paint, with modular design.



SCADA

Specialised in design, engineering and implementation of system integration, communication and security surveillance for remote control and monitoring of infrastructure, process equipment and building facilities.



AUTOMATED FARE COLLECTION

Specialising in fully integrated concepts, where ticketing is designed in an ergonomic way, allowing user-flexible payments of the transportation fees by the most convenient payment methods available.



CONTACT US

If you want to become a MARIC member or to learn more about MARIC, kindly drop an email to: enquiry@maric.my
Or visit:
www.maric.my
Address:
Malaysia Rail Industry Corporation (MARIC) MIGHT Partnership Hub, Jalan Impact, 63000 Cyberjaya, Selangor, Malaysia

ELIGIBILITY REQUIREMENT

CRITERIA:

- Local equity / shareholding must be 51% or more;
- At least 70% of Senior Management and Executives are Malaysia Citizen;
- The company must be doing work related to rail industry, products, services and / or its supporting industry

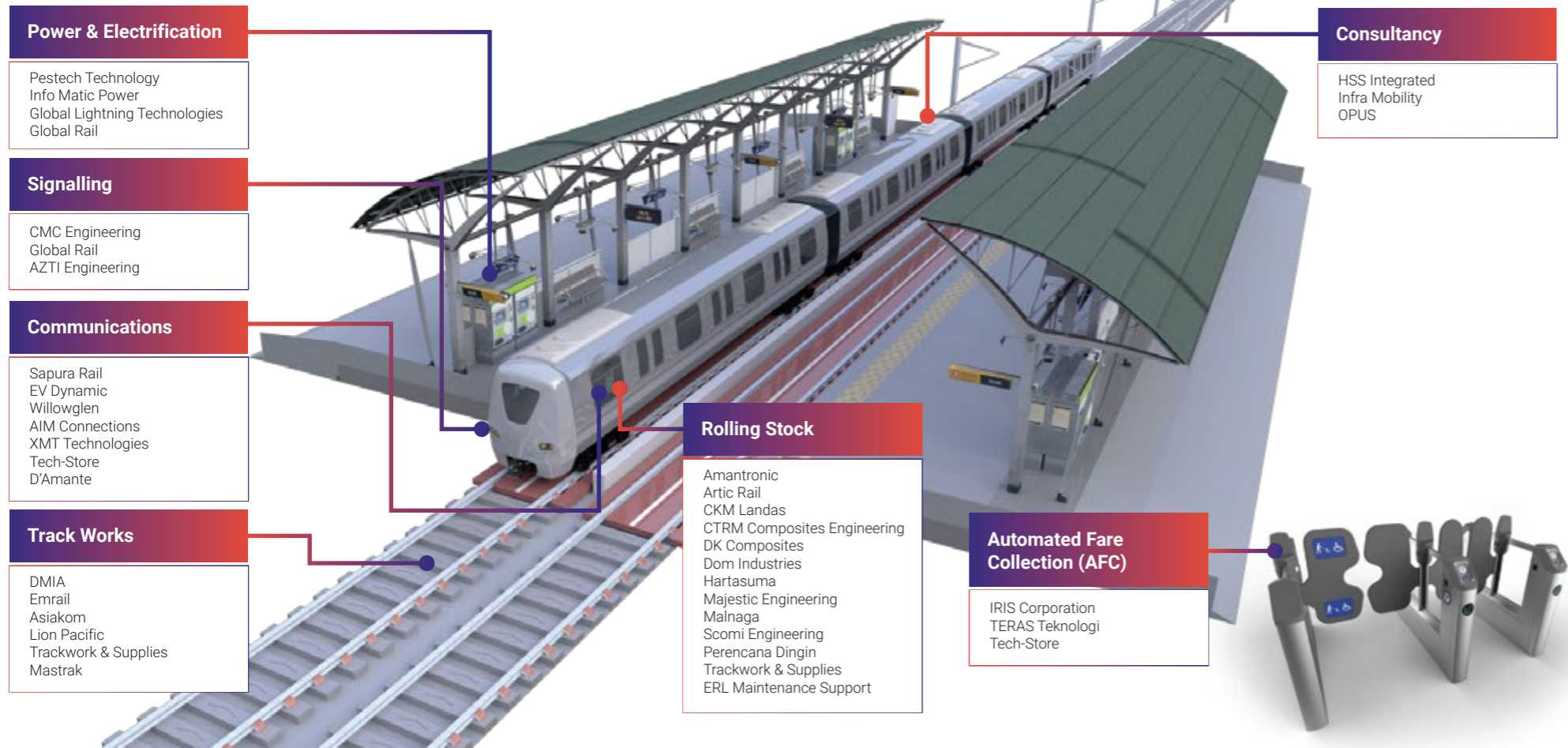


**RAIL INDUSTRY
HANDBOOK
2019/2020**
POSITIONING LOCAL RAIL PLAYERS IN REALISING
INTELLIGENT TRANSPORT FOR THE GLOBAL COMMUNITY

Supported by



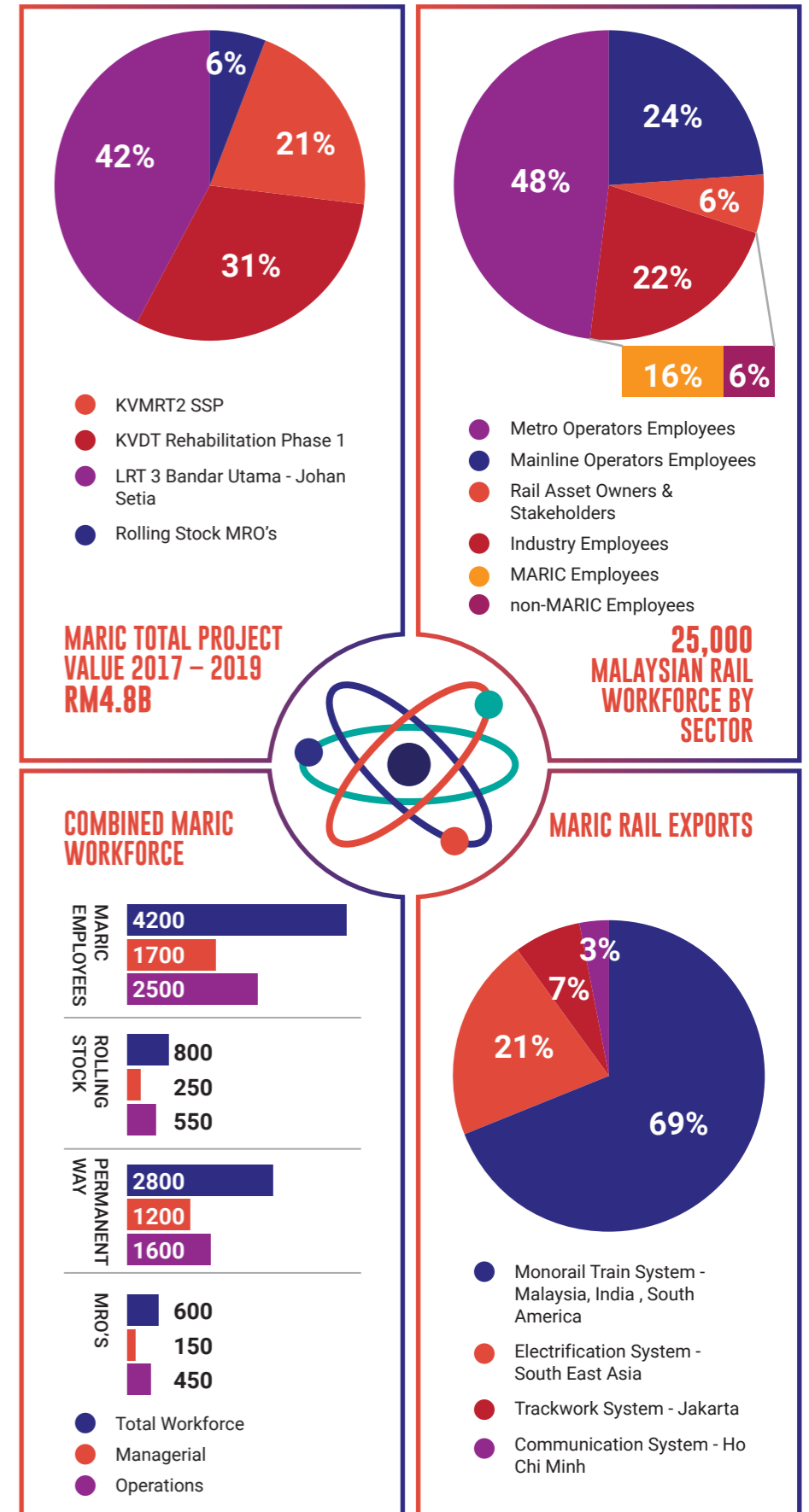
END TO END RAILWAY SYSTEMS CAPABILITY



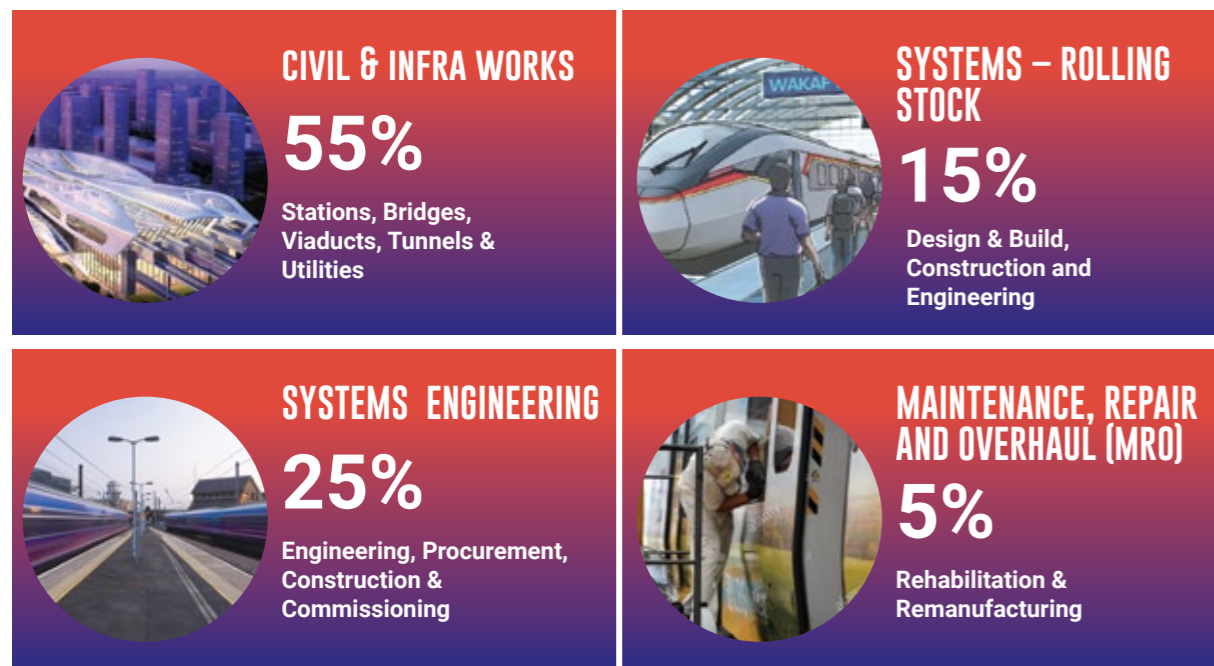
MARIC AT A GLANCE

MARIC was formed on 17 April 2017 and is supported by the Malaysian Industry-Government Group for High Technology (MIGHT). At present, the corporation consists of 36 member companies specialising in rail products, rail services and technologies.

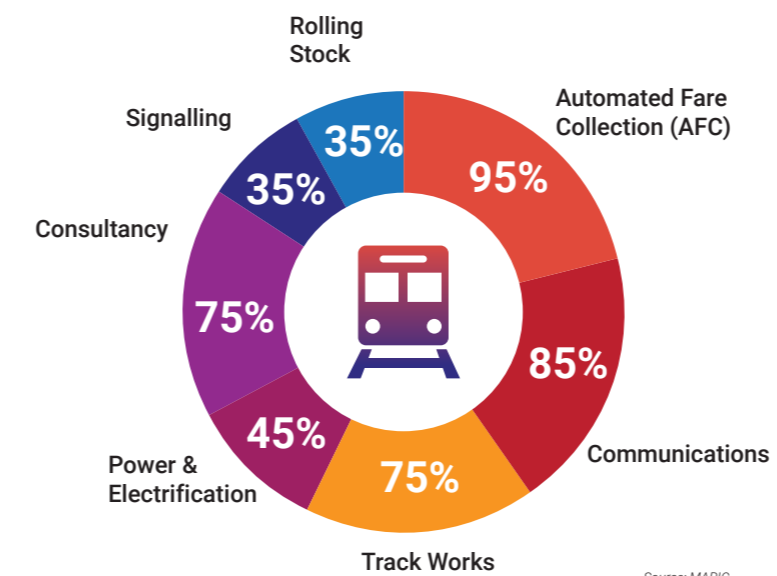
In any rail project, system works would represent 40% of the overall cost while infra/civil works would take up 60%. The system works comprise of 7 clusters: Power & Electrification, Signalling, Communications, Track Works, Rolling Stock, Automated Fare Collection (AFC) and Consultancy. MARIC offers systems engineering expertise in all the 7 clusters.



RAIL CONSTRUCTION WORK SCOPE



LOCAL RAIL COMPETENCIES BY PERCENTAGE IN SYSTEMS ENGINEERING, PROCUREMENT, CONSTRUCTION & COMMISSIONING (EPCC)



Source: MARIC

Source: MARIC